



Artist impression

1116 STUD ROAD, ROWVILLE

Triple One Six Stud presents a tremendous opportunity to secure a spacious, three-storey townhouse in the green, family-friendly Melbourne suburb of Rowville.



Artist impression

1116 STUDD ROAD

3



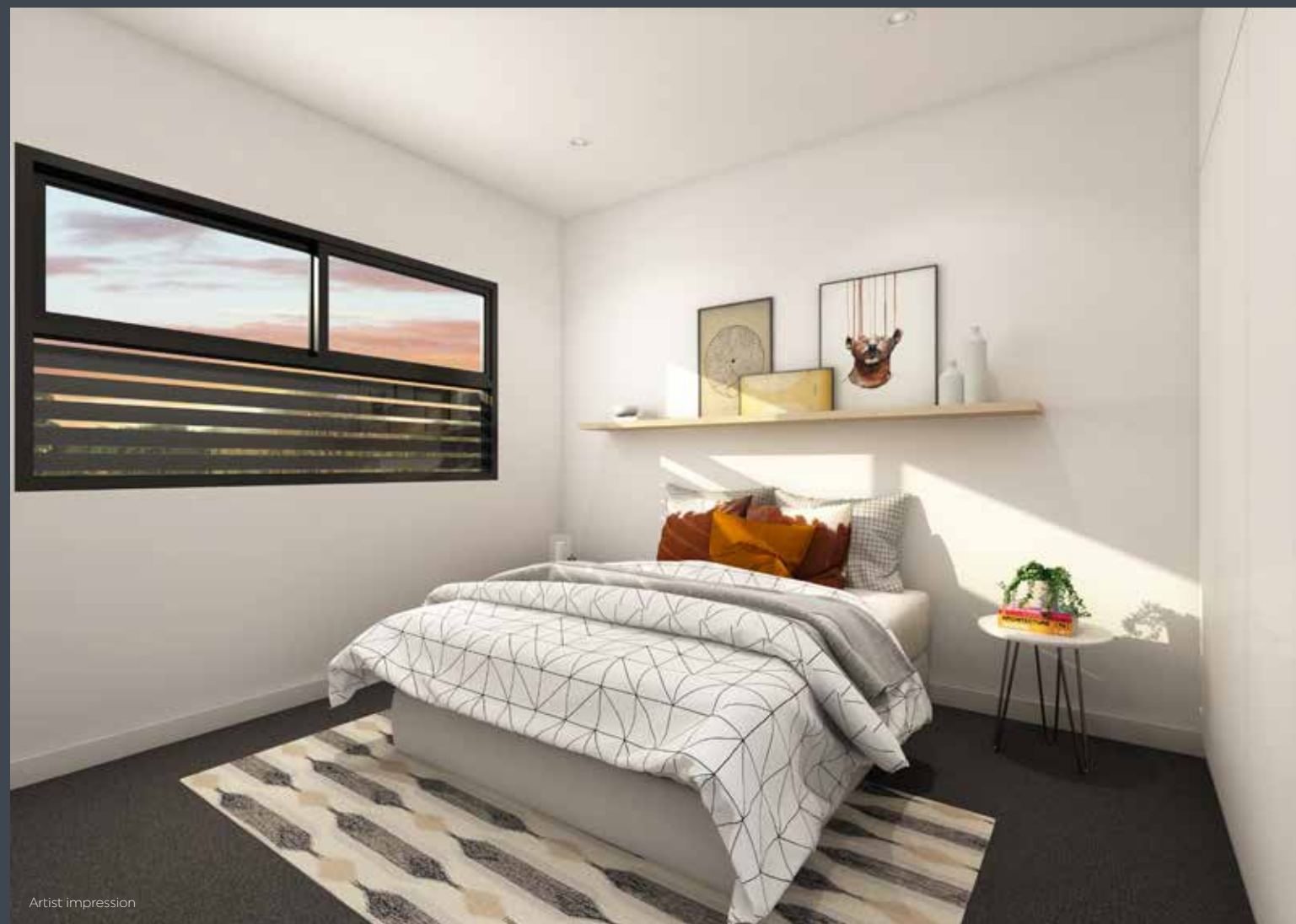
ULTRA-MODERN LUXURY THREE-STOREY TOWNHOUSES IN THE HEART OF ROWVILLE

Featuring 2 bedrooms, and either 1, 2 or 3 bathrooms,, each Triple One Six Stud townhouse blends style, comfort, tranquility and convenience to create a truly impressive residence. You'll come home to a spacious environment where comfort and warmth flow throughout.

Each townhouse embraces clever design to provide a deeply stylish living experience. With clean architectural lines and clever use of space the result is modern and maintenance free. In addition, quality internal finishes and appliances are complemented by a single garage and vibrant outdoor spaces including courtyards and balconies.

It's the attention to detail that makes all the difference. Quality features include stone benchtops, European stainless steel appliances, split system heating/cooling, as well as panel heating in bedrooms. Stylish court yards and balconies are made for serene nights spent eating and entertaining with friends.

First Home Buyers Grant of \$10,000 applies plus significant stamp duty savings are available. Perfect for investors with great rental yield. Express your interest today.





Rowville Lake

A CHARMING SUBURB FILLED WITH OUTDOOR WONDERS

Rowville is definitely a suburb for those who love the outdoors. While walking its charming, tree-lined streets, you'll feel its generous and warm community feel.

On the weekend, recharge the batteries by wandering through the undisturbed nature of the majestic Churchill National Park. Or start the day with some coffee-fueled shopping at Caribbean Gardens, one of Melbourne's best outdoor markets and gardens.









If you love nothing more than grabbing the clubs and spending an afternoon walking pristine fairways, head for one of Rowville's three fantastic golf courses: Kingston Links Golf Course; Waverley Golf Club and Tirhatuan Lakes Public Gold Course.

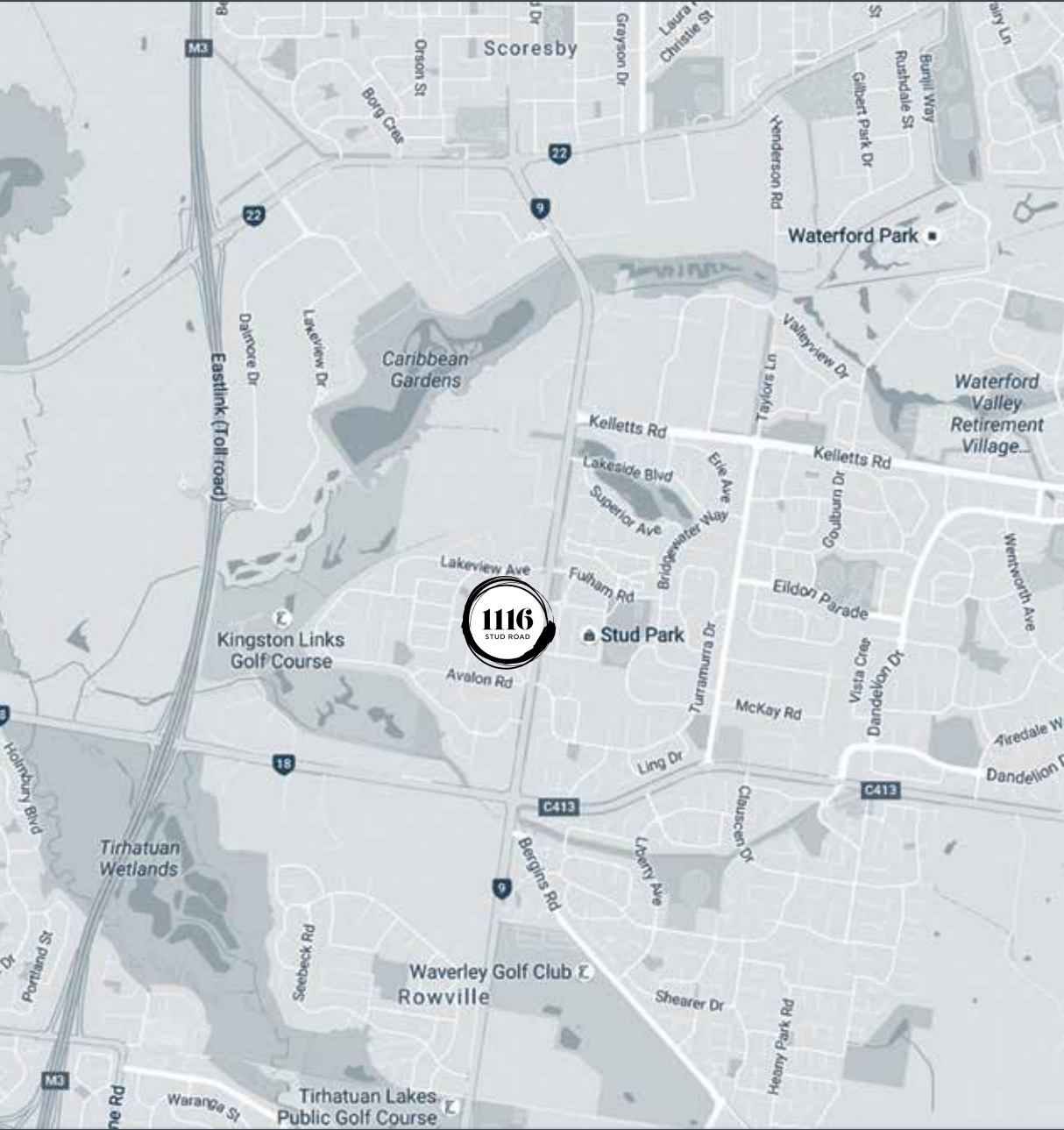
When you want to venture further afield, the Monash Freeway and Eastlink are in close proximity to whisk you into the city or into the picturesque surrounds of the Dandenongs or the Mornington Peninsula.

MORE THAN A GREAT LOCATION

Rowville is more than one of Melbourne's most thriving suburbs, it is also one of its most family friendly. Currently, 58% of Rowville's population is made up of family's who enjoy an easy going lifestyle.

Convenience is also a highlight of Rowville with Stud Park Shopping Centre located in the heart of the suburb. Featuring supermarkets, cafes, and fashion stores, the abundance of retail options close by will mean you'll never have to stray too far from home.

-  Access to Eastlink
-  Rowville Secondary College
-  Kingston Links Golf Course
-  Caribbean Gardens & Market
-  The Valley Private Hospital
-  25km to the city
-  6.5km to Westfield Knox
-  800m to Woolworths





AMITY
REAL ESTATE

P +61 3 9090 2500

F +61 3 9090 2501

info@amityproperty.com.au

amity.com.au