

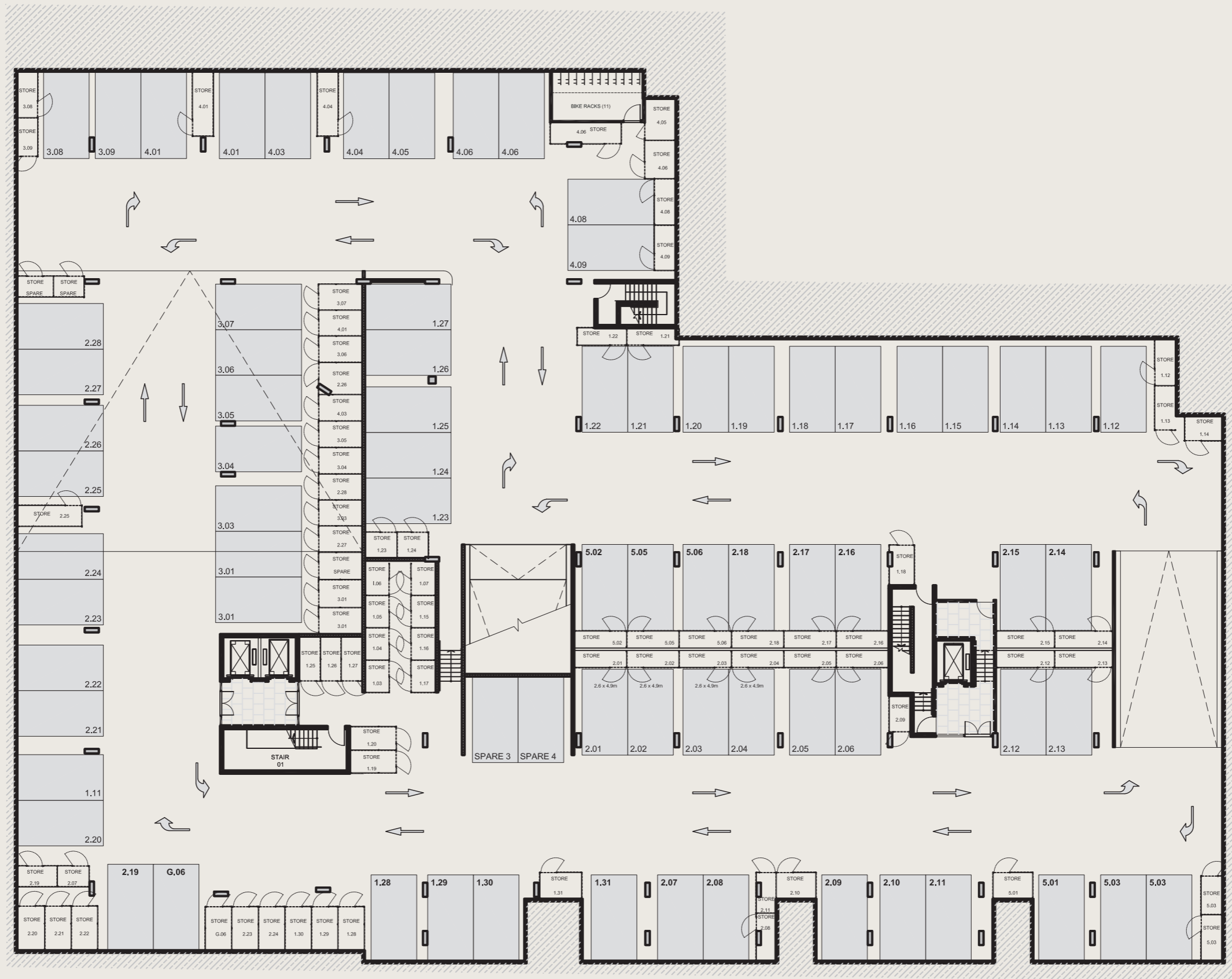
CENTREPIECE

Residences

Basement Level 1

Note: All are as shown are approximate. The information contained here in has been obtained from sources we believe to be reliable and therefore have no reason to doubt it's accuracy. The vendor and it's agent will not be responsible for any error or mis-description which may appear. Prospective purchasers or leasees are therefore advised to make whatever investigations they deem necessary.





EAST BOUNDARY ROAD

CENTRE ROAD

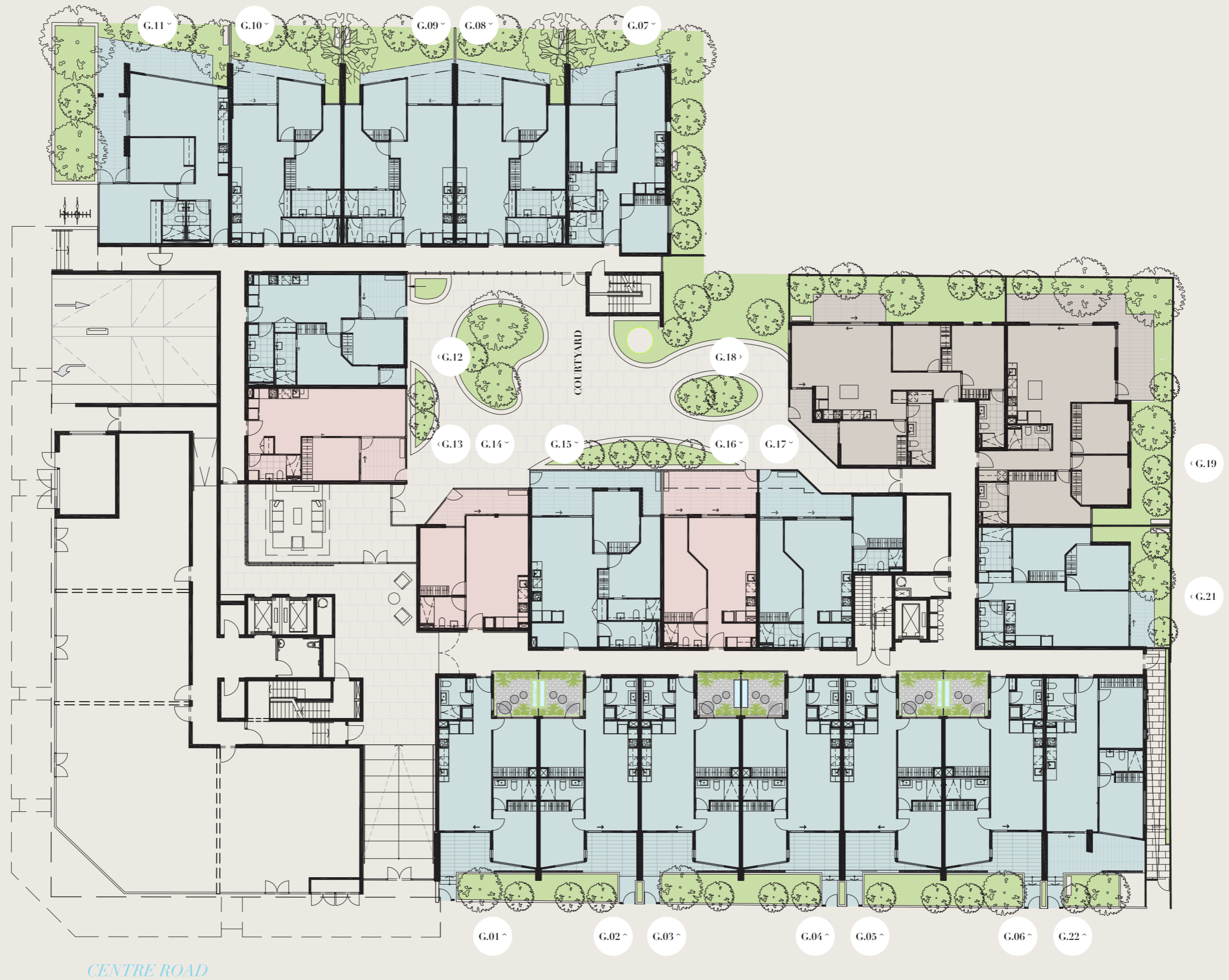
CENTREPIECE

Residences

Basement Level 2

Note: All are as shown are approximate. The information contained here in has been obtained from sources we believe to be reliable and therefore have no reason to doubt it's accuracy. The vendor and it's agent will not be responsible for any error or mis-description which may appear. Prospective purchasers or leasees are therefore advised to make whatever investigations they deem necessary.





CENTREPIECE

Residences

Ground Level

■ 1 Bedroom
 ■ 2 Bedroom
 ■ 3 Bedroom



Note: All as shown are approximate. The information contained here in has been obtained from sources we believe to be reliable and therefore have no reason to doubt it's accuracy. The vendor and it's agent will not be responsible for any error or mis-description which may appear. Prospective purchasers or leasees are therefore advised to make whatever investigations they deem necessary.

EAST BOUNDARY ROAD



CENTRE ROAD

CENTREPIECE

Residences

Level 1

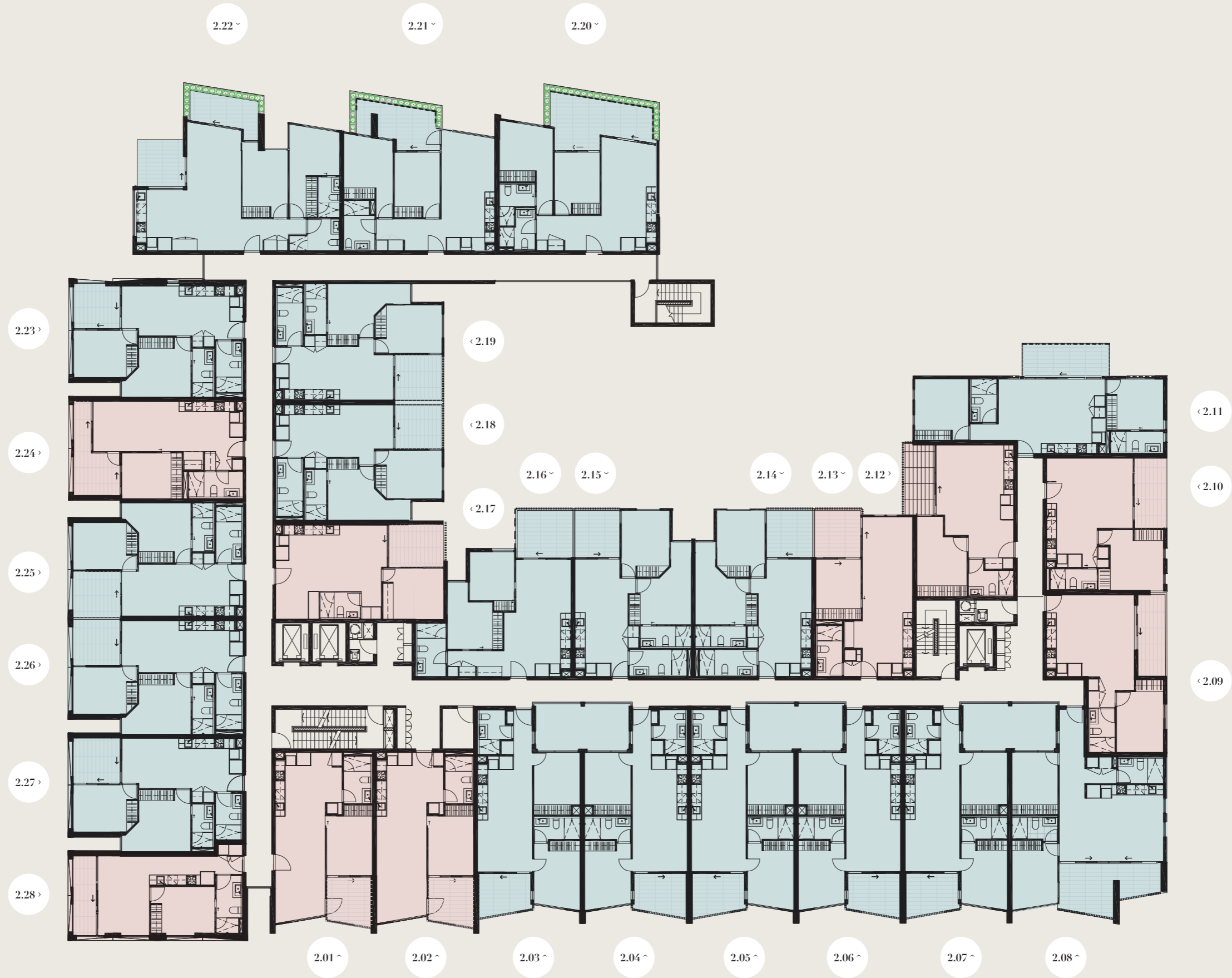
Note: All are as shown are approximate. The information contained here in has been obtained from sources we believe to be reliable and therefore have no reason to doubt it's accuracy. The vendor and it's agent will not be responsible for any error or mis-description which may appear. Prospective purchasers or leasees are therefore advised to make whatever investigations they deem necessary.

1 Bedroom 2 Bedroom 3 Bedroom



EAST BOUNDARY ROAD

CENTRE ROAD



CENTREPIECE

Residences

Level 2

■ 1 Bedroom
 ■ 2 Bedroom
 ■ 3 Bedroom

Note: All are as shown are approximate. The information contained here in has been obtained from sources we believe to be reliable and therefore have no reason to doubt it's accuracy. The vendor and it's agent will not be responsible for any error or mis-description which may appear. Prospective purchasers or leasees are therefore advised to make whatever investigations they deem necessary.



EAST BOUNDARY ROAD

3.06 >

3.07 >

3.08 >

3.09 >

3.10 >

< 3.05

< 3.04

< 3.03

< 3.01

CENTRE ROAD

CENTREPIECE

Residences

Level 3

1 Bedroom 2 Bedroom 3 Bedroom



Note: All are as shown are approximate. The information contained here in has been obtained from sources we believe to be reliable and therefore have no reason to doubt it's accuracy. The vendor and it's agent will not be responsible for any error or mis-description which may appear. Prospective purchasers or leasees are therefore advised to make whatever investigations they deem necessary.

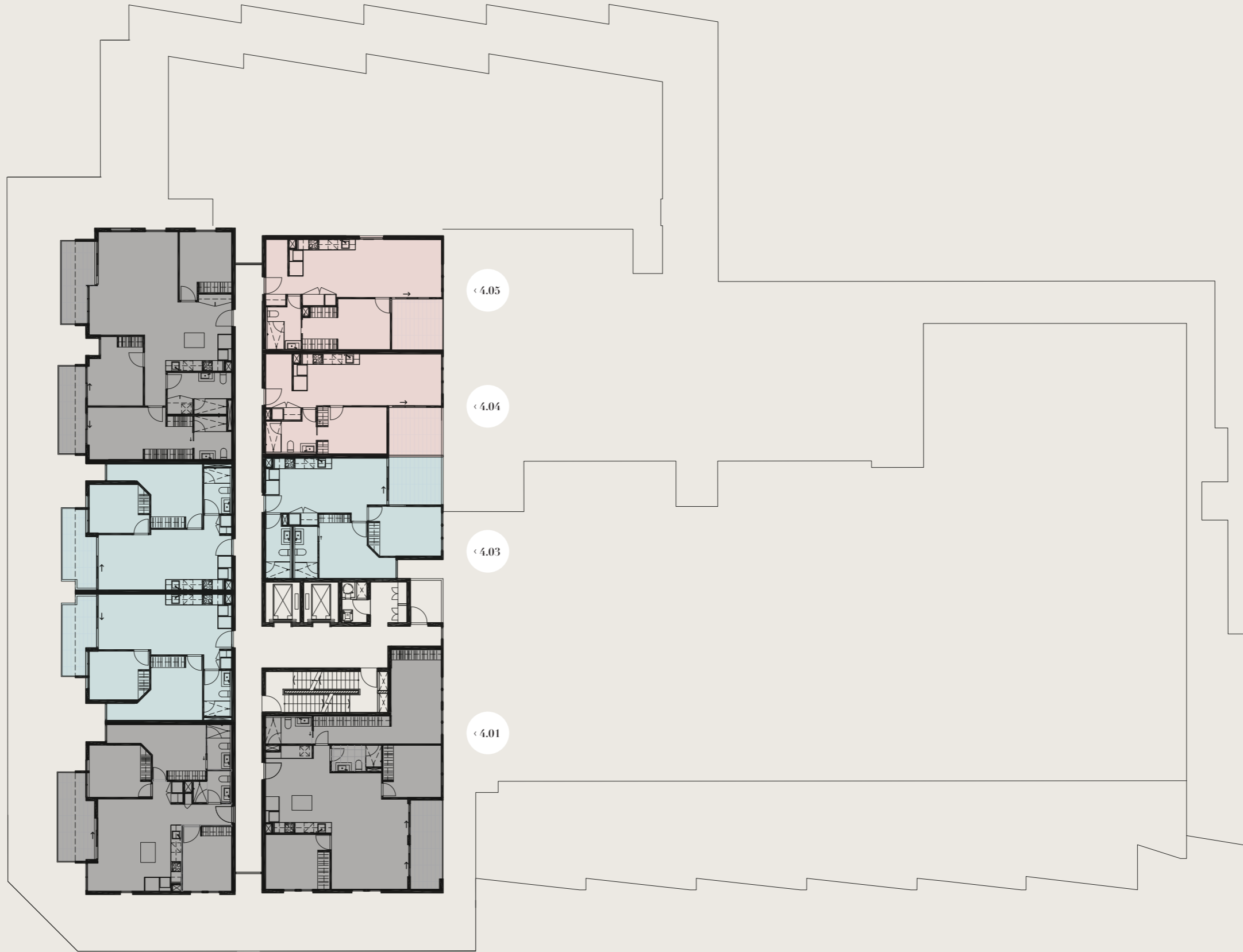
EAST BOUNDARY ROAD

4.06 >

4.08 >

4.09 >

4.10 >



CENTRE ROAD

CENTREPIECE

Residences

Level 4

1 Bedroom 2 Bedroom 3 Bedroom



Note: All are as shown are approximate. The information contained here in has been obtained from sources we believe to be reliable and therefore have no reason to doubt it's accuracy. The vendor and it's agent will not be responsible for any error or mis-description which may appear. Prospective purchasers or leasees are therefore advised to make whatever investigations they deem necessary.

EAST BOUNDARY ROAD

5.05 >

5.06 >

5.07 >

< 5.03

< 5.02

< 5.01



CENTRE ROAD

CENTREPIECE
Residences

Level 5

1 Bedroom
 2 Bedroom
 3 Bedroom



Note. All are as shown are approximate. The information contained here in has been obtained from sources we believe to be reliable and therefore have no reason to doubt it's accuracy. The vendor and it's agent will not be responsible for any error or mis-description which may appear. Prospective purchasers or leasees are therefore advised to make whatever investigations they deem necessary.