



Fitzroy North
PatchApartments.Com.Au

PatchPeople

Goldfields



Welcome to the Patch

Patch people know what's important when it comes to modern living. They want a northside home with a strong sense of community; a place they can repair their bike, grow some plants on their terrace and get a strong coffee on their doorstep. They care about the little things that make a home: warmth, light and a sense of space.

Illustrator and Man About Town

Jeff the Peff Explores his Local Patch

It's not really a secret – Fitzroy North is one of Melbourne's most coveted postcodes. You'll find Patch at the top of Queens Parade, just near the Merri Creek bike trail and surrounded by a vibrant mix of shops, cafés, parks, train stations and tram stops. It's the perfect spot to call home.



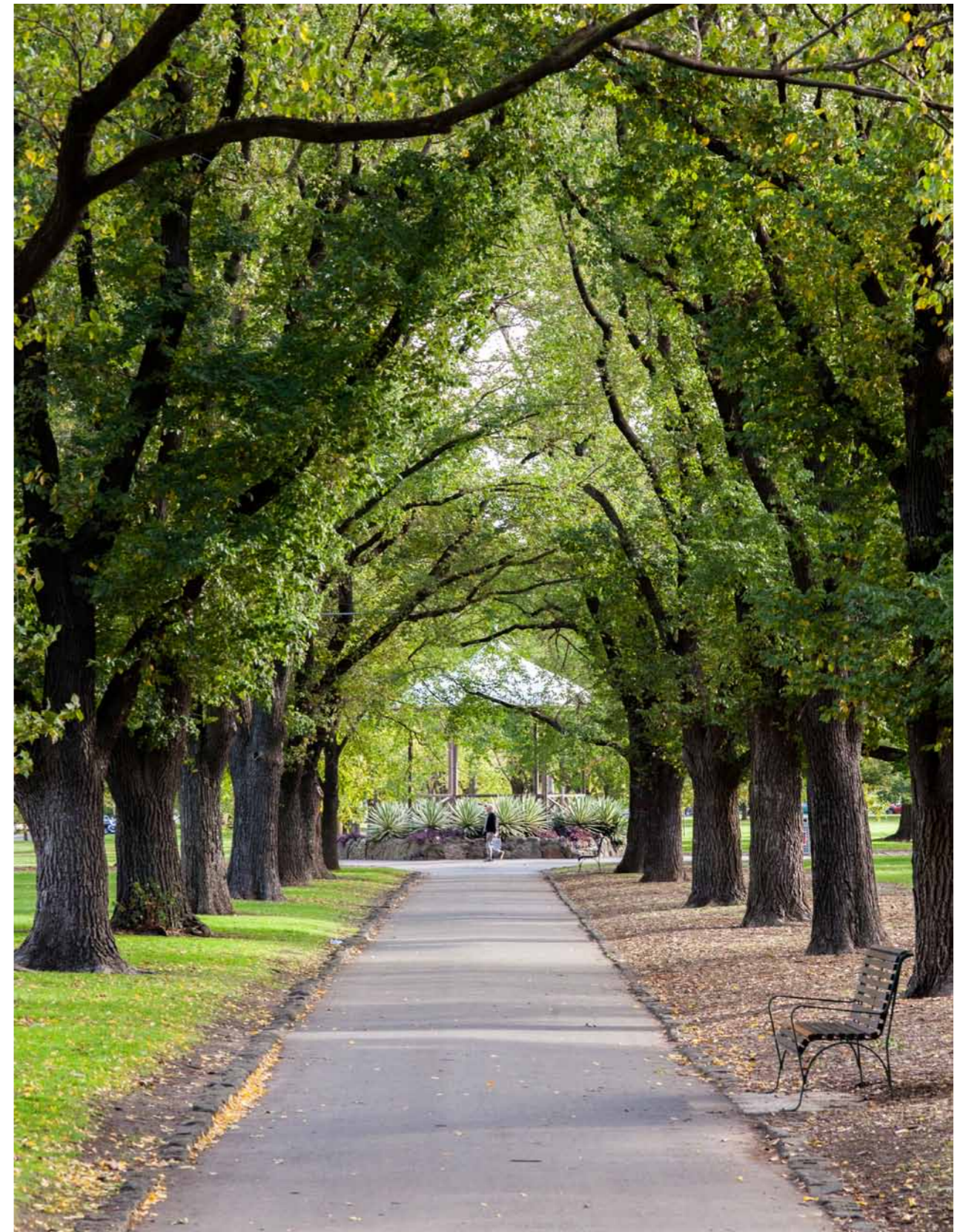
- The Local Patch**
- 1. *Darling Gardens*
 - 2. *Terminus Hotel*
 - 3. *Merri Creek*
 - 4. *Clifton Hill & Rushall Train Stations*
 - 5. *McCoppins*
 - 6. *Westgarth Cinema*
 - 7. *Mixed Business*
 - 8. *Mayors Park*

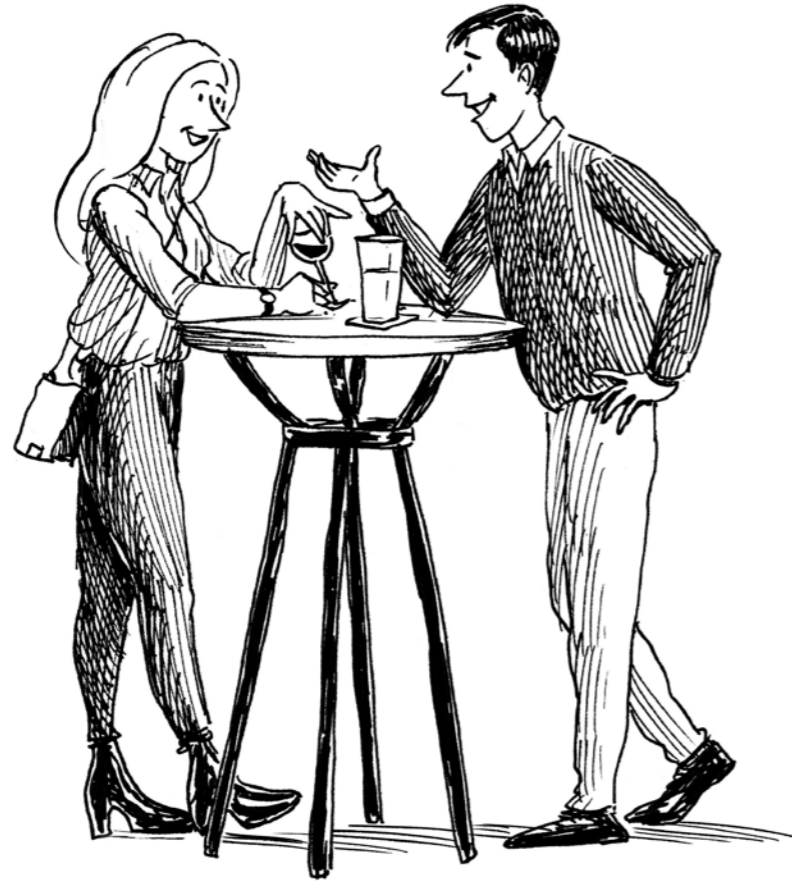
P 1



Darling Gardens

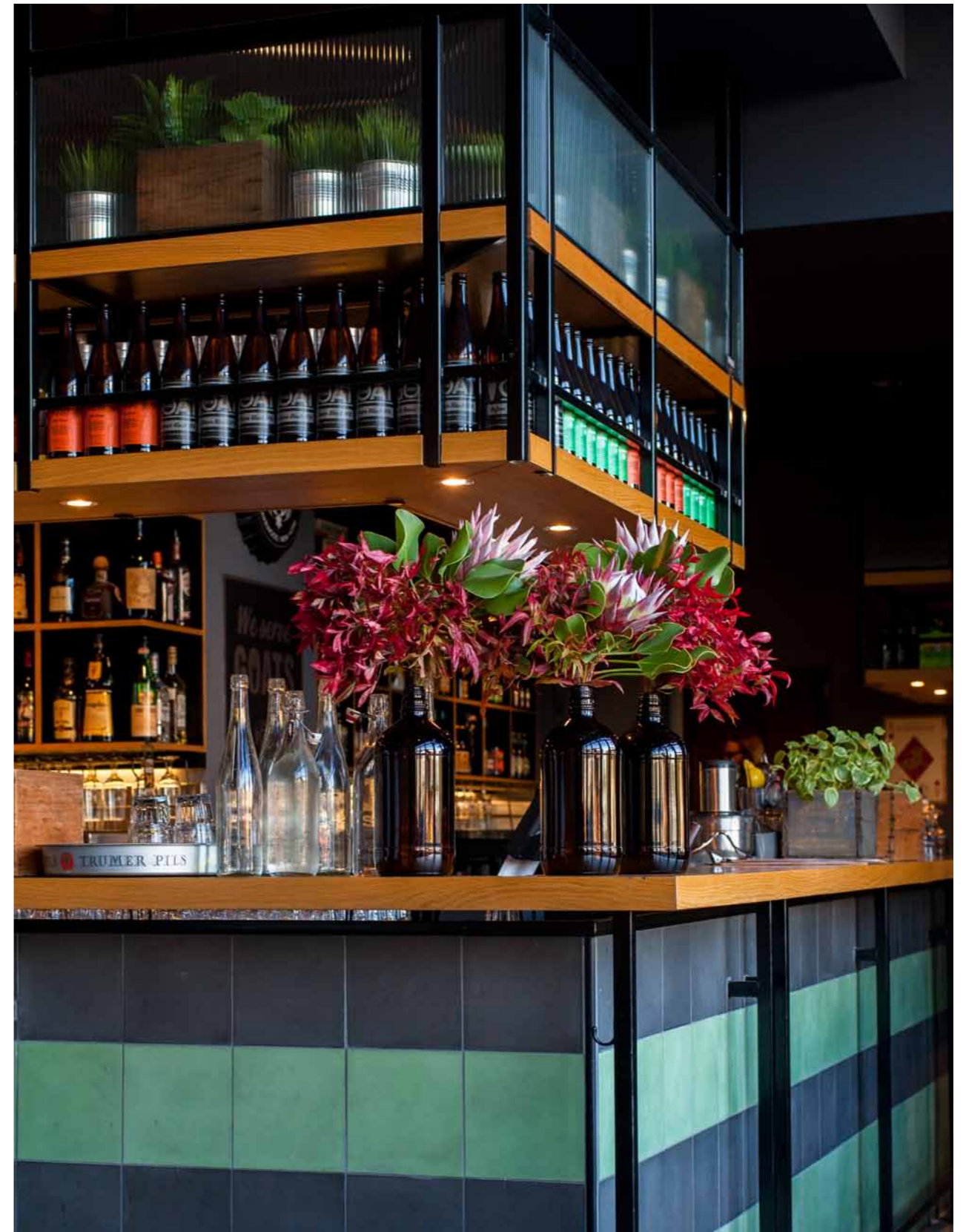
Darling Gardens is only a few minutes down the road from Patch. It's a leafy spot for Sunday socialising or walking the dog, with a big rotunda for family occasions.





Terminus Hotel

Henceforth known as 'the local'. The Terminus Hotel is an award-winning gastro pub with a great range of craft beers and a cosy, art deco vibe. And it's just across the road.

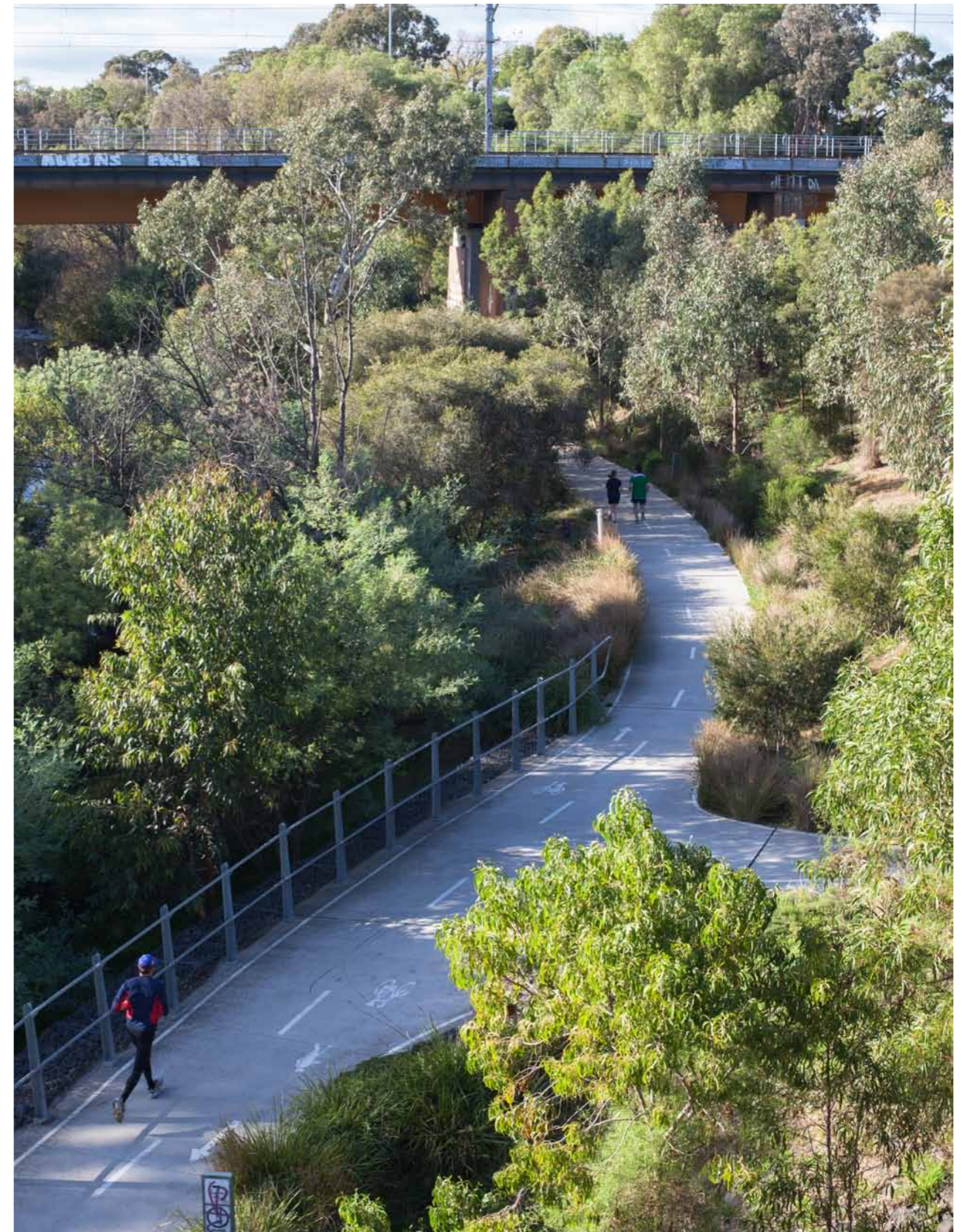


P 3



Merri Creek

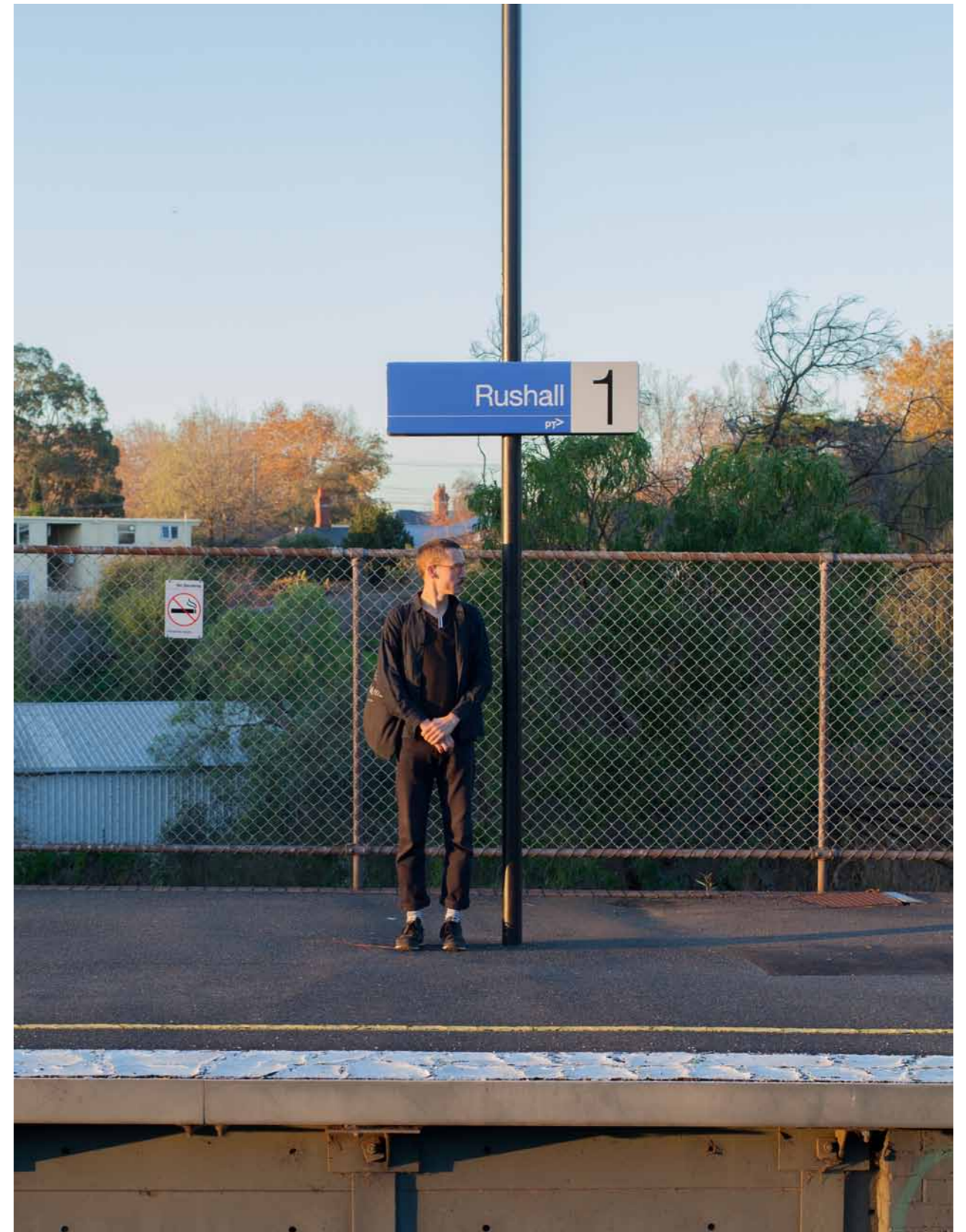
Merri Creek winds its way through Melbourne's northern suburbs, meeting the Yarra at nearby Dights Falls. It's quiet, green and lush, with a great bike track that runs through Fitzroy towards the city.





Clifton Hill & Rushall Train Stations

At Patch, you're only ever five stops from the CBD. Clifton Hill and Rushall stations are a stone's throw away, which means a painless commute along the South Morang or Hurstbridge lines.





McCoppins

A short walk down Queens Parade, McCoppins is your local gourmet supermarket and wine shop. Friendly staff sell a wide range of quality products, plus an international selection of beer and fine wines.



P 6



Westgarth Cinema

Westgarth Cinema is a quaint mix of old-world architecture and new-age technology. Set in a 1920's art deco building, it screens a good mix of blockbusters and independent films. You can even get a nice glass of shiraz with your popcorn.

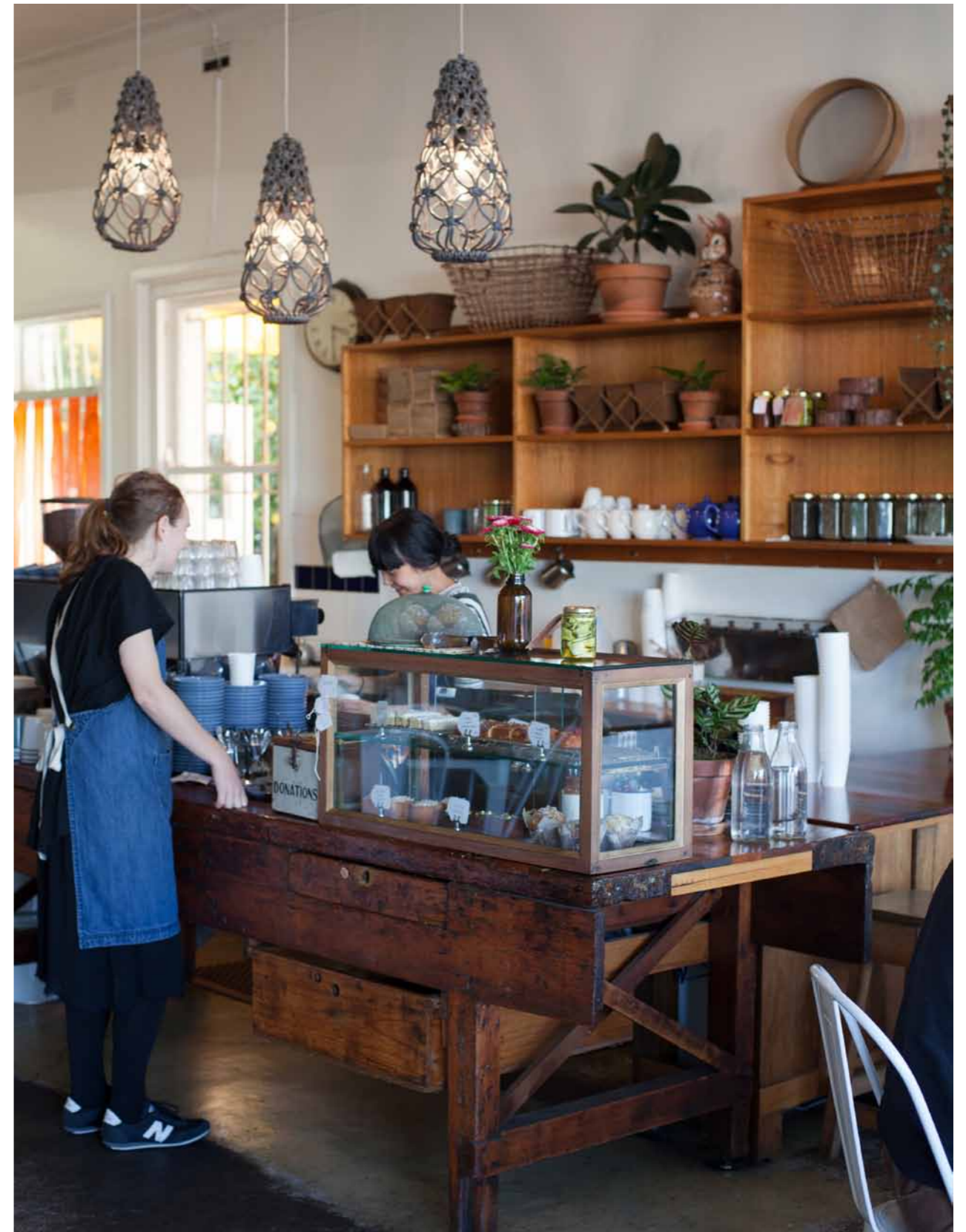


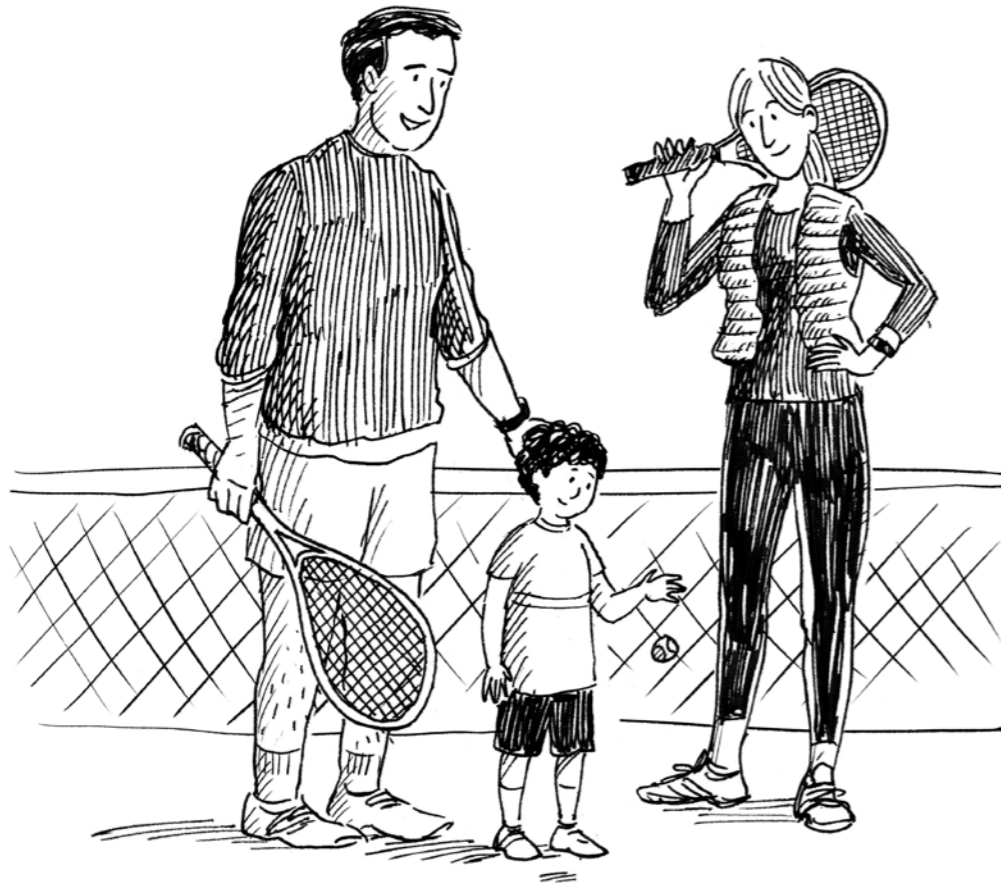
P 7



Mixed Business

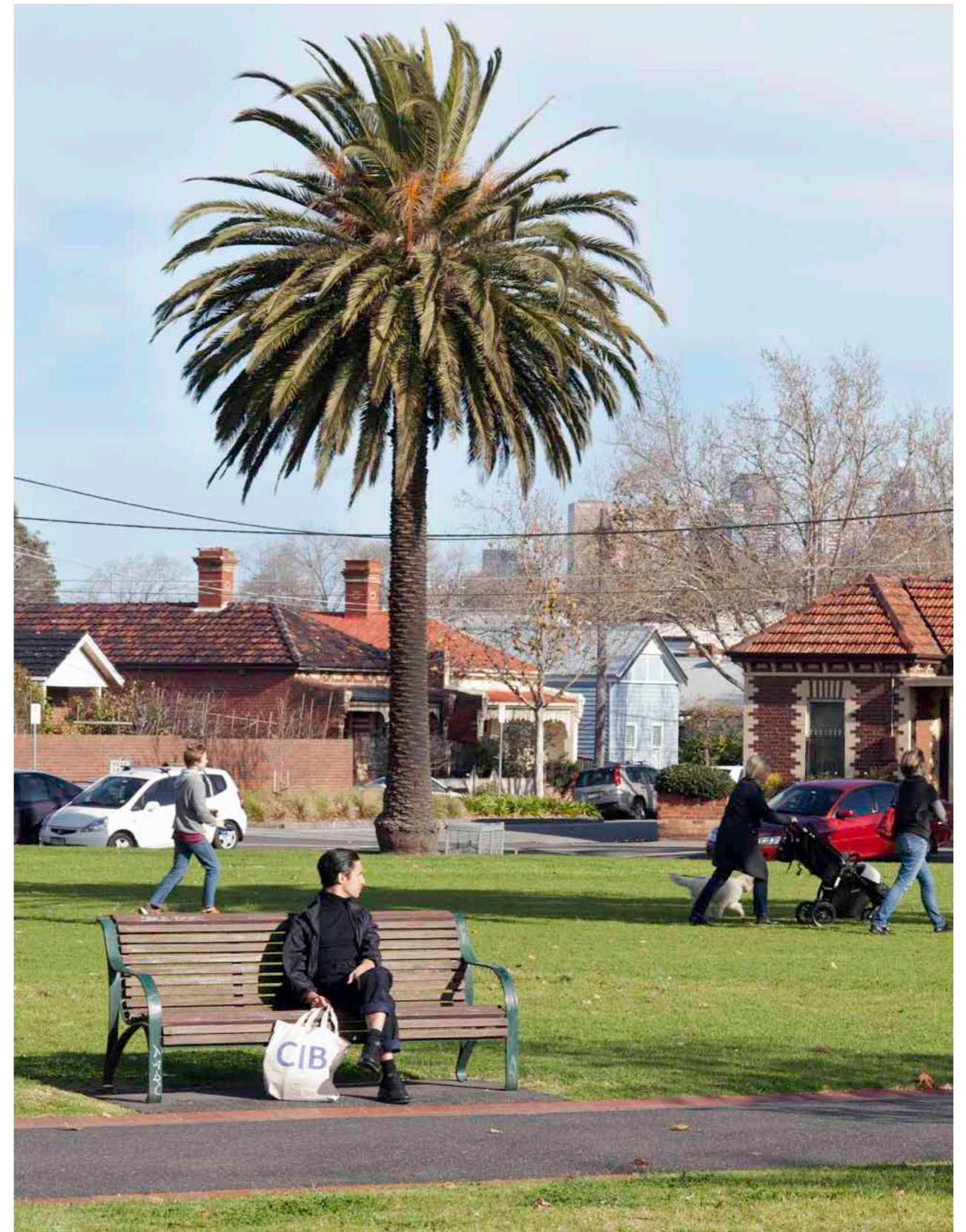
Now for Melbourne's most important amenity: a good café. Mixed Business is a local favourite. Right across the road from Patch, it serves up everything from hearty soups to icy granitas. And of course excellent coffee.

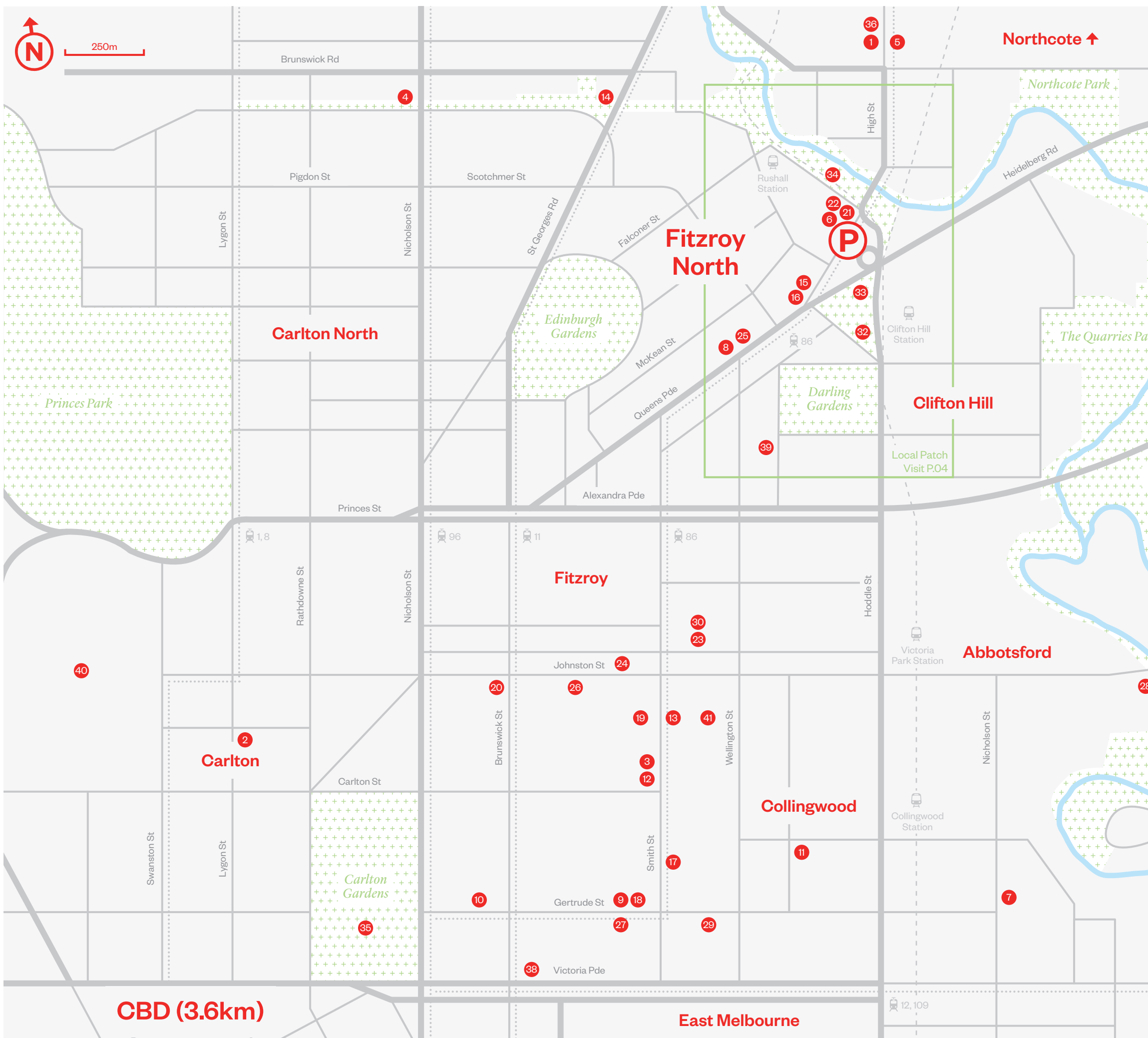
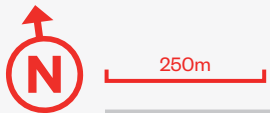




Mayors Park

With a children's playground, tennis courts, swimming pool and gym on site, Fitzroy's Mayor's Park is the obvious choice for a Saturday afternoon tennis game or a slow Sunday under the trees.





Café

1. Barry
2. D.O.C. Espresso
3. Gelato Messina
4. Green Park Café
5. Il Melograno
6. Mixed Business
7. Three Bags Full
8. Two:Bob

Restaurant

9. Builders Arms Hotel
10. Cutler & Co
11. Le Bon Ton
12. Panama Dining
13. Saint Crispin
14. Supermaxi
15. Tutti I Sapori

Bar

16. Chianti
17. The Grace Darling Hotel
18. Gertrude St Enoteca
19. Hell of the North
20. Naked For Satan
21. Terminus Hotel

Lifestyle

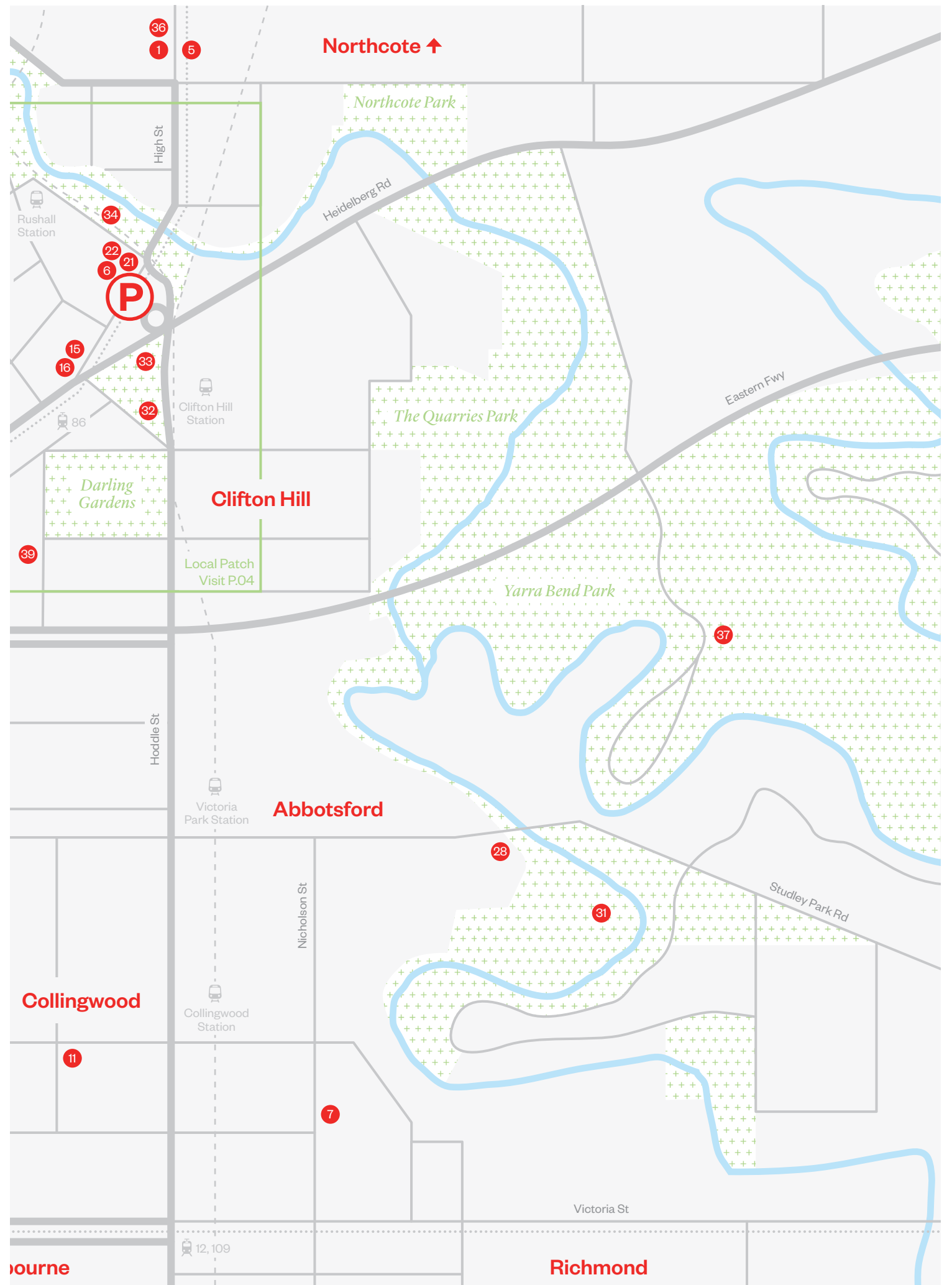
22. Fowlers Flowers
23. Loose Leaf
24. Mark Tuckey
25. McCoppins
26. Tait
27. Tarlo & Graham

Recreation

28. Abbotsford Convent
29. Australian Galleries
30. Backwoods Gallery
31. Collingwood Childrens Farm
32. Collingwood Leisure Centre
33. Mayors Park
34. Merri Creek
35. Royal Exhibition Building
36. Westgarth Cinema
37. Yarra Bend Golf Course

Education

38. Australian Catholic University
39. Clifton Hill Primary
40. Melbourne University
41. St Joseph's Primary



Ride

the



Justin Hutchinson – Urban Commons

Patch

Around

Melbourne cycling culture runs deep in Fitzroy North, which is why each Patch resident has access to over 90 bike spaces. Residents also have access to several leafy bike trails just around the corner.

Pick up a Ride Around the Patch map for your guide to the best cycle routes.

**Enquire About
Your Patch**

**PatchApartments
.Com.Au**



Goldfields