



Fitzroy North  
PatchApartments.Com.Au

# Patch

Goldfields

**Patch brings together function and amenity in a crystalline sculptural form, responding sensitively to its surrounds while establishing a local approach to social sustainability. Grounded in principles of natural light, privacy, air access and nature, the architecture of Patch is designed to breathe. These qualities of considered, collective living are what make Patch a true vertical community.**

**Quino Holland**  
*Architect, Fieldwork Projects*

# Innovative Apartments

Ⓟ

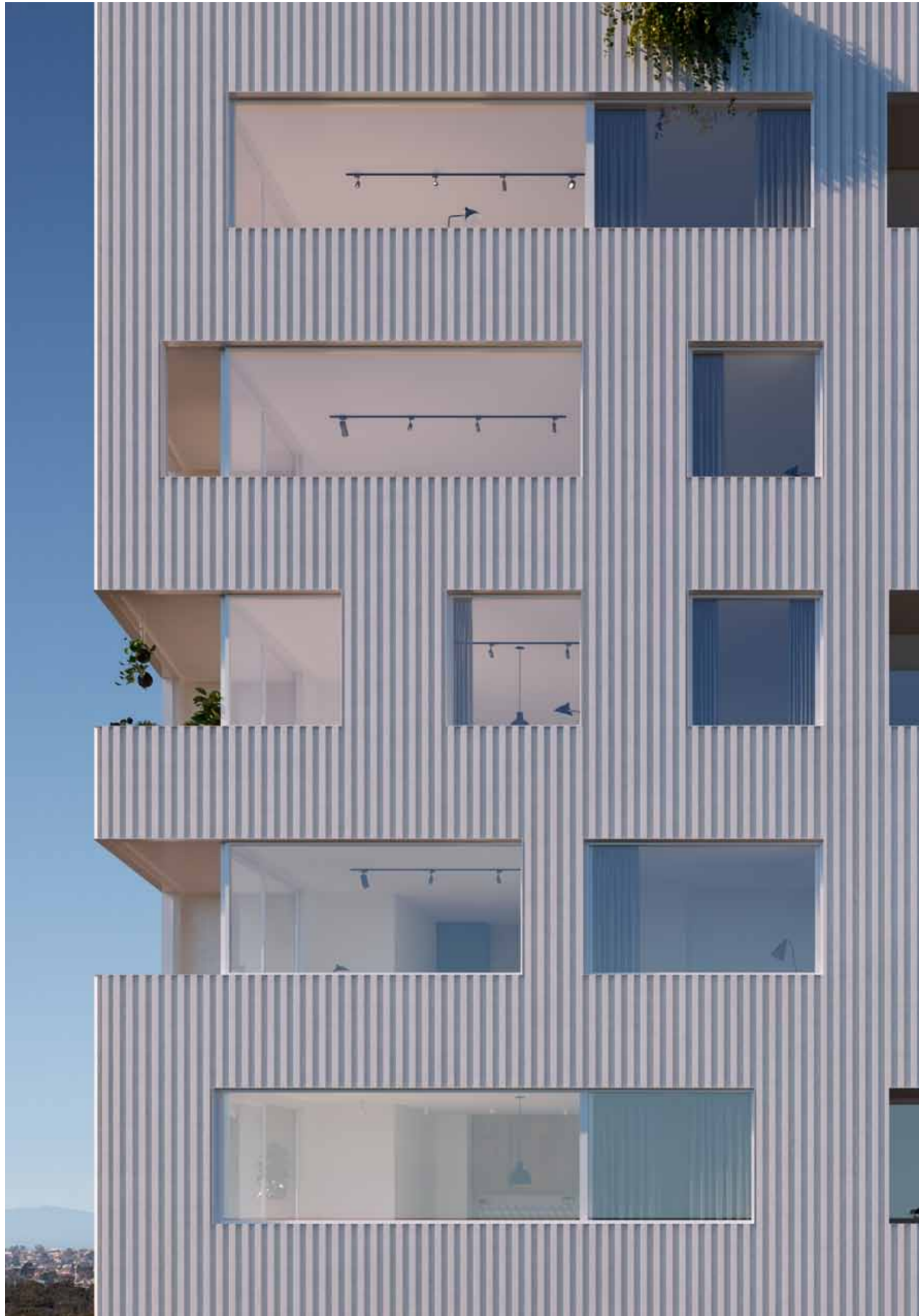
Bold and original, Patch is a blueprint for the future of boutique Melbourne living.  
Designed for contemporary lifestyles.

# The Light is Always On.

A refined, subtle palette, clean lines and crystalline forms, blonde timber and natural light. A place where the light is always on to welcome you home. Patch is classic inner northside living. Designed to be innovative and bold, with full use of space, light and the surrounding view, every detail of Patch has been thoroughly considered by local architects Fieldwork Projects.

Welcome home. We left the light on for you.





The exterior of Patch is light and tactile, subtle architectural highlights provide a nod to that classic northside aesthetic.



With an expansive podium-level terrace space on level 8 harbouring views of the CBD, the communal areas are bright, spacious and considered, providing a functional space for all residents



# Liveable Apartments

Ⓟ

Liveability is the difference between a house and a home. It's the feeling you get when you open the front door to a sense of light and warmth.

# Light

# &

# Bright



Natural ventilation and space ensure Patch feels light, bright and airy. Just like a home should.

Patch apartments are designed to be flexible, liveable and light. With an option of two distinct colour schemes, the first offers a light and bright approach with clean lines and subtle timber highlights. Generous shelving and built-in storage keep the living space practical, while ASKO appliances and sharp feature tile splashbacks add a touch of refinement to the design. With an abundance of natural light, the overall feel is contemporary, private and warm – a perfect blank canvas.





Outdoor terraces are angled to take advantage of natural light, air and views, whilst maintaining seclusion and shade.

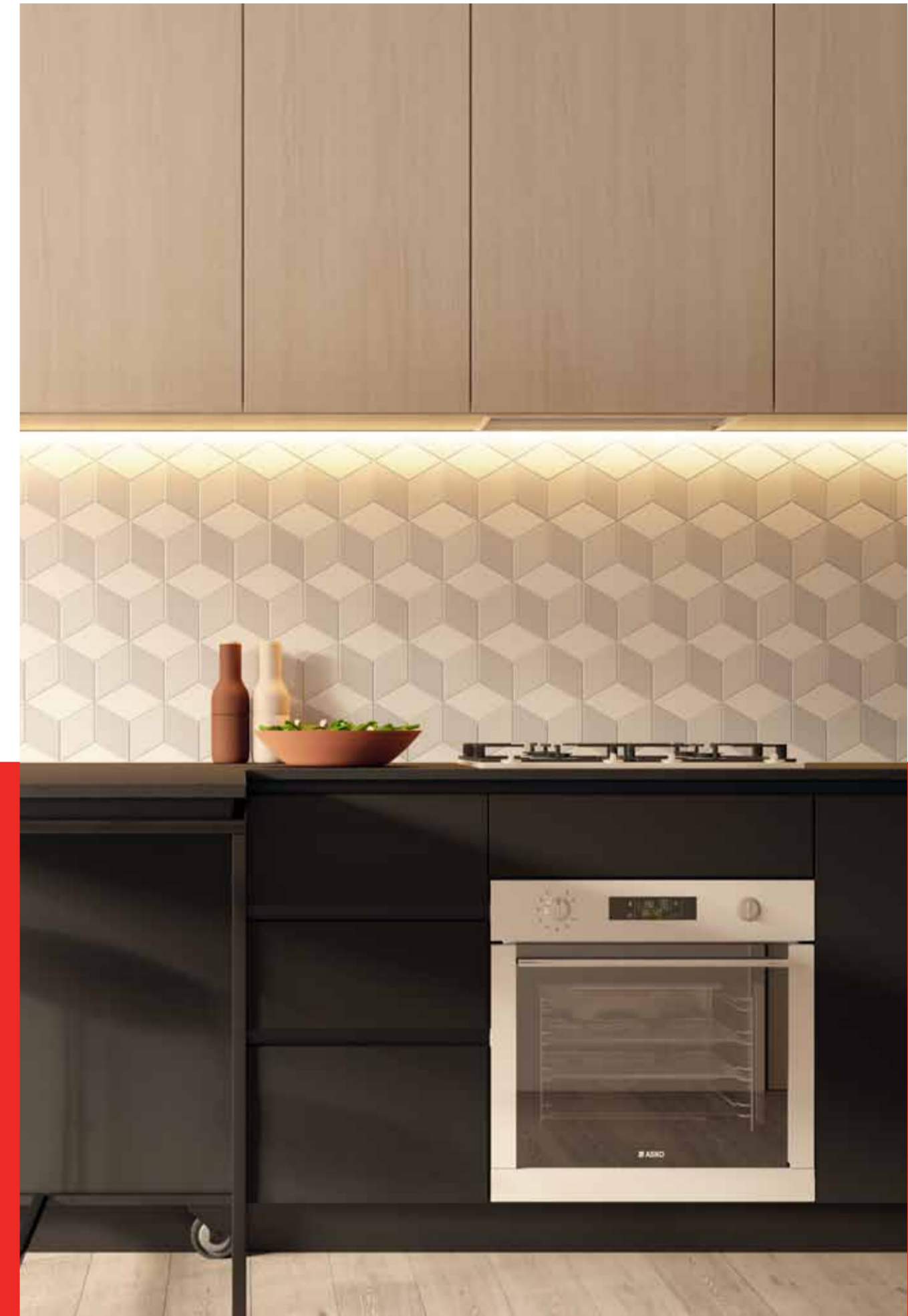
When it comes to interior design, success always hinges on the tiny details. Each individual floorplan has been carefully considered to ensure the best design outcome is achieved, with functionality as the focus. Overlaid with high quality fixtures and fittings such as ASKO appliances, selected finish tapware and bespoke island benches, every element has been chosen with care.



Memorable spaces have something to say. They make a statement. As well as considerations such as convenience and liveability, Patch has been designed with innovation and bold design at the forefront. The monochromatic colour scheme provides a sharp and striking interior for those with a penchant for the punchy.

# High

# Contrast



Built-in storage and feature timber shelving keeps the interior spaces practical and efficient without compromising the clean, minimalist aesthetic.



A high contrast finish means it's easy to add your personal touch to the space.  
Charcoal joinery sits comfortably with any colour scheme.

# Vertical Community

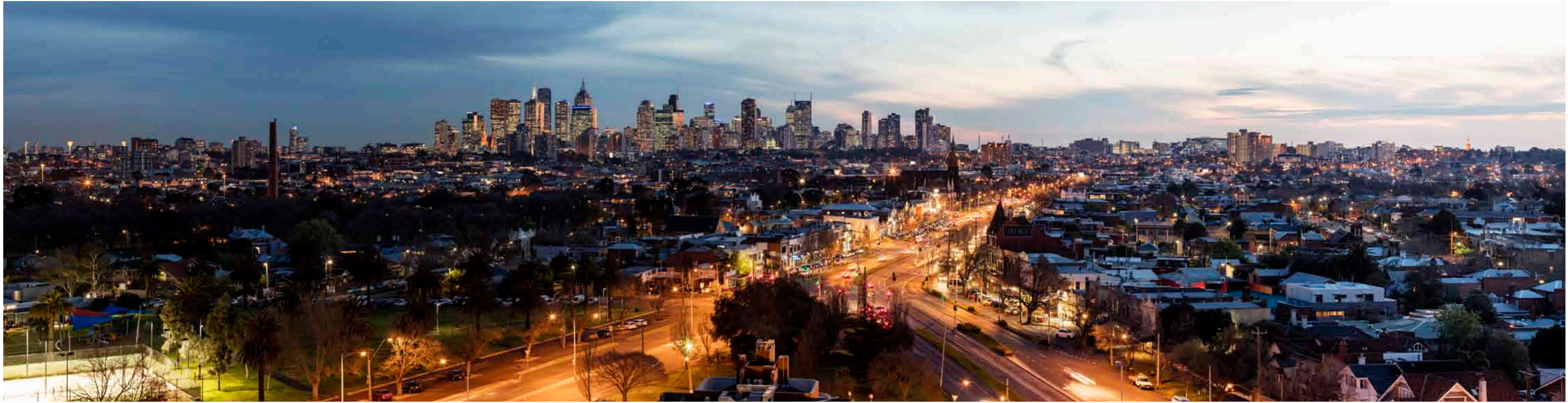
Ⓟ

Northside living is one part style, two parts substance, which is why Patch has been designed with community in mind. Live well at Patch.



Level 8  
 Designed by the recognised leader of landscape architecture in Australia, Tract, in collaboration with Urban Commons, Patch's terrace space on level 8 is an example in contemporary communal living. The tree-dotted deck provides indoor and outdoor dining facilities for entertaining, a communal kitchen and cooking area and uninterrupted panoramic views of the CBD.

Northside living is all about community. So Patch was designed with shared spaces in mind – places where people can engage, connect and interact. Innovation and liveability, together at last on the same Patch.



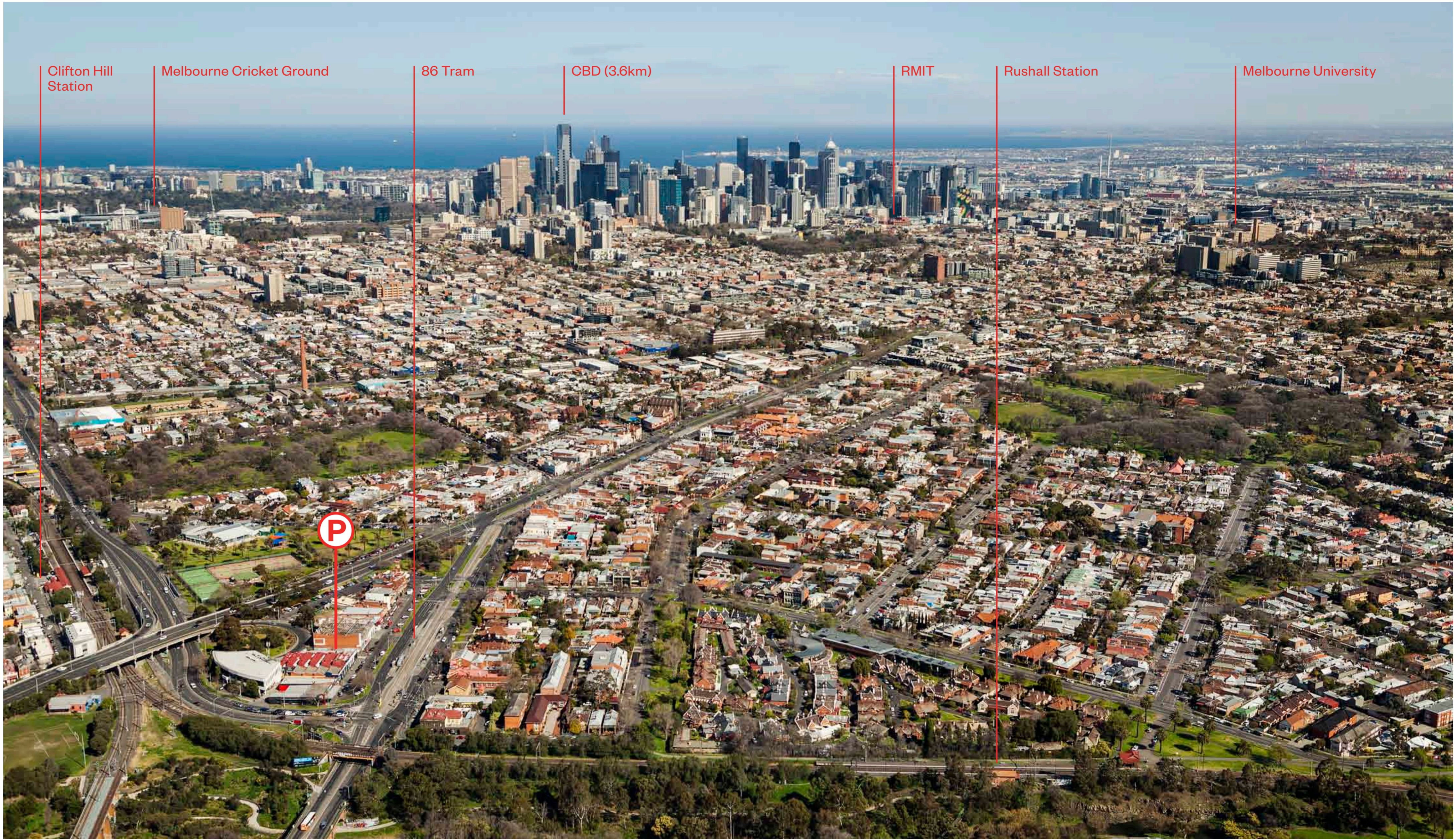
Level 8 Communal Sky Terrace  
South West View

Patch's spacious communal terrace on level 8 features views over nearby Princes Park, Melbourne Zoo, the city skyline and the glowing lights of the MCG.



From level 11 you can see all the way to the Dandenong Ranges – a green row of hills beyond the sweeping expanse of the South Eastern suburbs below.

Level 11  
South East View



Clifton Hill Station

Melbourne Cricket Ground

86 Tram

CBD (3.6km)

RMIT

Rushall Station

Melbourne University

P



# Patch Team



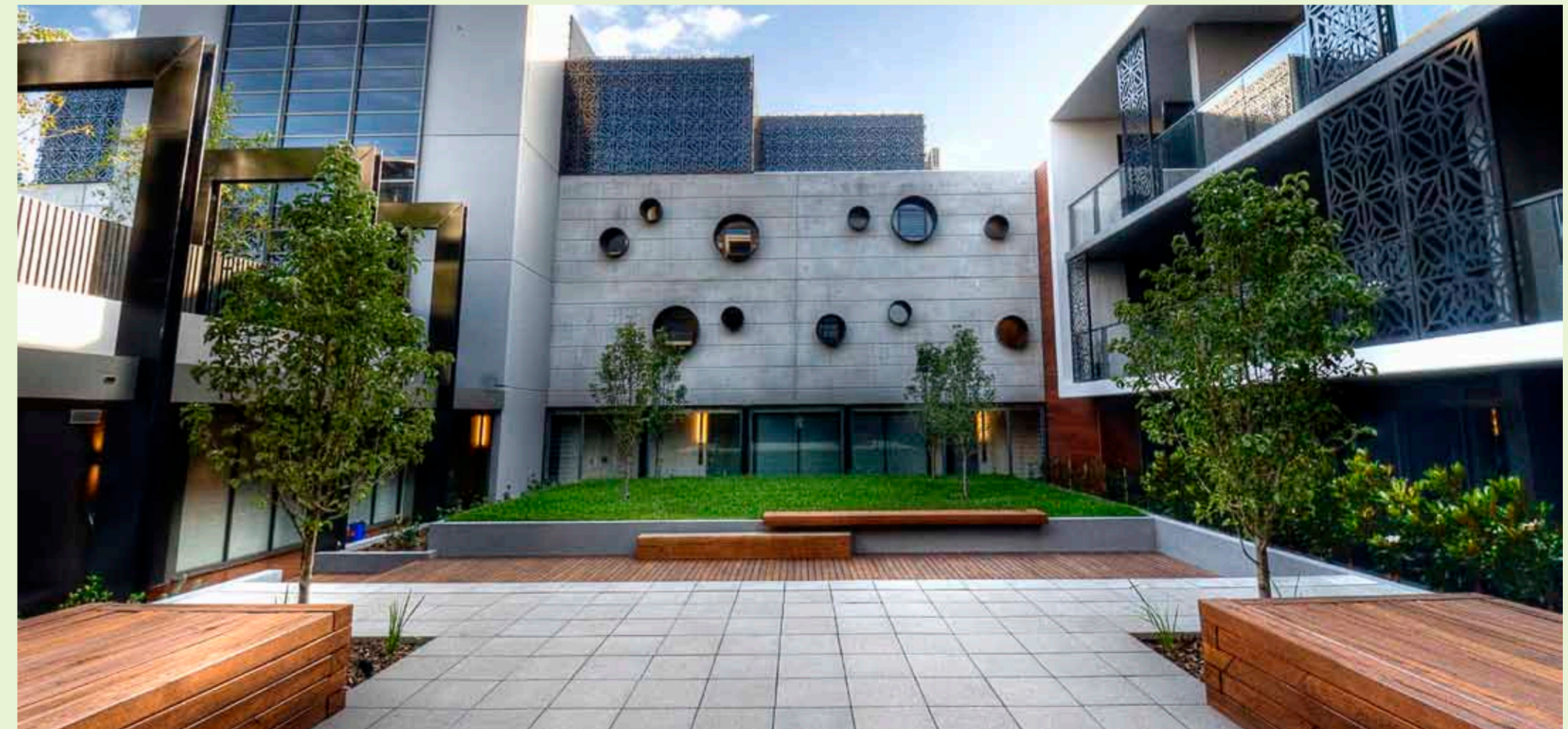
## Fieldwork Projects — Architects

For architectural firm Fieldwork Projects, good design is about aspiration and practicality. That means that form and the function work in cooperation, not competition. Based in Clifton Hill, Fieldwork Projects is working to define the future of northside living. [www.fieldworkprojects.com.au](http://www.fieldworkprojects.com.au)



## Goldfields — Developer

Combining vision and expertise, Goldfields has forged an enviable reputation of delivering distinctive residential environments that showcase superior design and aesthetic. Our homes maintain a sophisticated, yet relaxed sense of style located amidst thriving communities. [www.goldfieldsgroup.com.au](http://www.goldfieldsgroup.com.au)



## Tract — Landscape & Planning

Tract is a leading contemporary planning and design collective that specialises in landscape architecture, town planning and urban design. They helped reconcile Patch's internal and external spaces, giving the building a unique and cohesive feel. [www.tract.com.au](http://www.tract.com.au)

**Enquire About  
Your Patch**

**PatchApartments  
.Com.Au**



Goldfields