

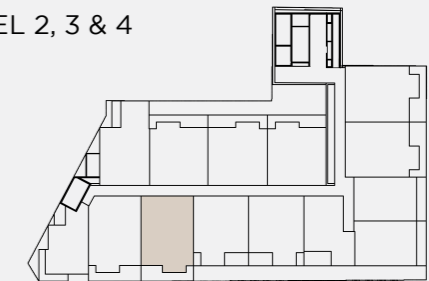
233 EAST

RINGWOOD RESIDENCES

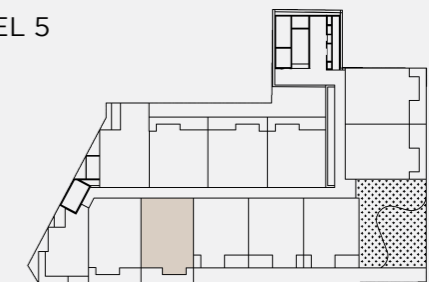
TYPE A

BEDROOMS	2
BATHROOMS	2
CARPARKS	1
STORAGE	1
RESIDENCE AREA	71.0m ²
TERRACE / BALCONY AREA	12.6m ²
TOTAL AREA	83.6m²

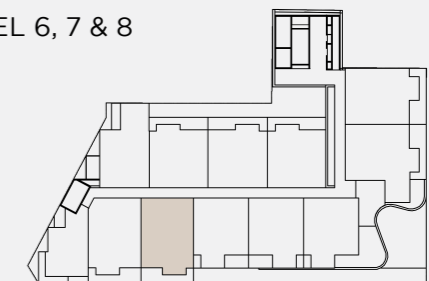
LEVEL 2, 3 & 4



LEVEL 5



LEVEL 6, 7 & 8



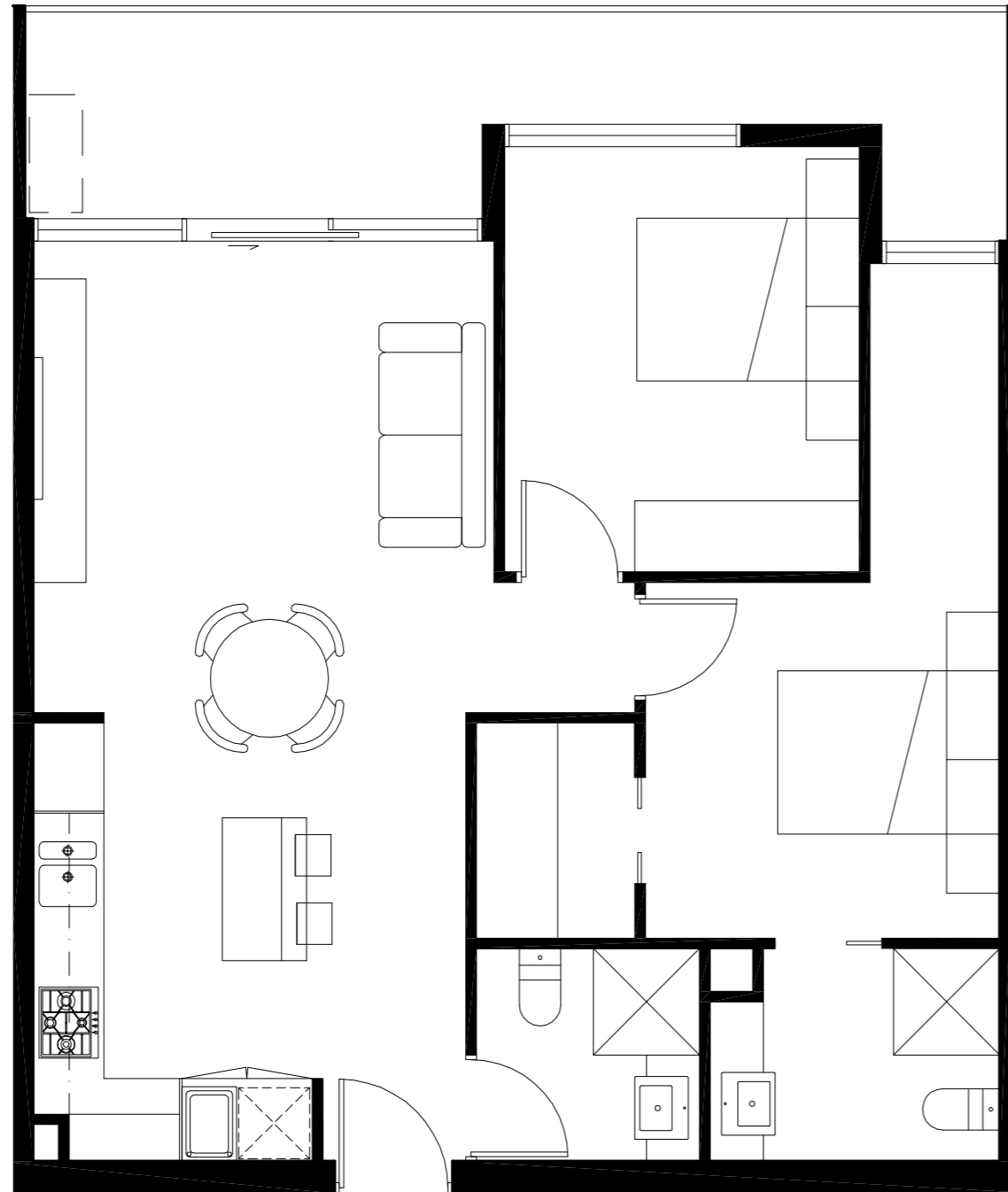
The material contained in this brochure does not constitute an offer, inducement, representation, warranty or contract. All images are artist's impressions only and are intended as a guide only. Loose furniture, white goods and planters and any items depicted are not included in the sale of any apartment, are for illustrative purposes only and may not be to scale. Images may not identify adjacent structures, features or landscaping. The area, layout and dimensions depicted in images of apartments and common property in the Development are not to scale and may differ from actual areas and measurements upon completion. Measurements are not of floor areas and may be based upon any methodology determined by the Vendor or Developer. All prospective purchasers rely on their own enquiries in relation to the Development, including areas and dimensions of apartments (it being acknowledged that there are different methodologies of measurement) and common property, having regard to the Architectural Plans, the Specifications, the Plan of Subdivision and any other information in the Contract and the Vendor's Statement. If a Contract of Sale is entered into, purchasers acknowledge that nothing in this brochure has been relied upon and that the Contract of Sale contains the only representations upon which the Purchaser relies.

233 EAST

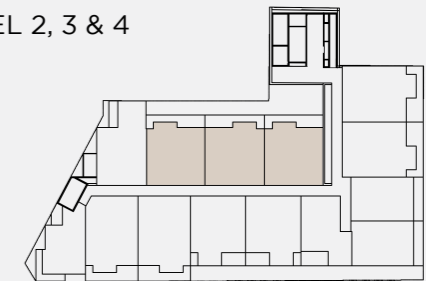
RINGWOOD RESIDENCES

TYPE B

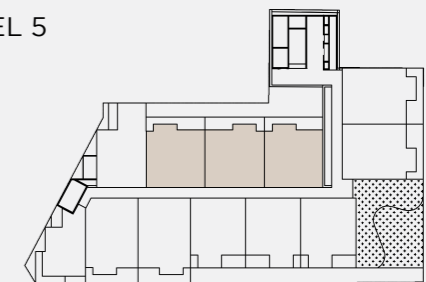
BEDROOMS	2
BATHROOMS	2
CARPARKS	1
STORAGE	1
RESIDENCE AREA	66.0m ²
TERRACE / BALCONY AREA	12.0m ²
TOTAL AREA	78.0m²



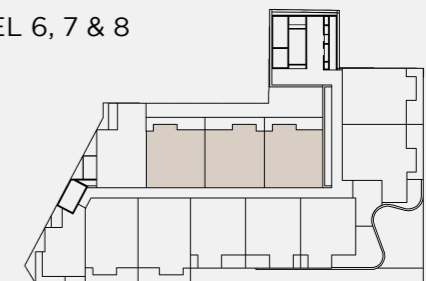
LEVEL 2, 3 & 4



LEVEL 5



LEVEL 6, 7 & 8



The material contained in this brochure does not constitute an offer, inducement, representation, warranty or contract. All images are artist's impressions only and are intended as a guide only. Loose furniture, white goods and planters and any items depicted are not included in the sale of any apartment, are for illustrative purposes only and may not be to scale. Images may not identify adjacent structures, features or landscaping. The area, layout and dimensions depicted in images of apartments and common property in the Development are not to scale and may differ from actual areas and measurements upon completion. Measurements are not of floor areas and may be based upon any methodology determined by the Vendor or Developer. All prospective purchasers rely on their own enquiries in relation to the Development, including areas and dimensions of apartments (it being acknowledged that there are different methodologies of measurement) and common property, having regard to the Architectural Plans, the Specifications, the Plan of Subdivision and any other information in the Contract and the Vendor's Statement. If a Contract of Sale is entered into, purchasers acknowledge that nothing in this brochure has been relied upon and that the Contract of Sale contains the only representations upon which the Purchaser relies.

233 EAST

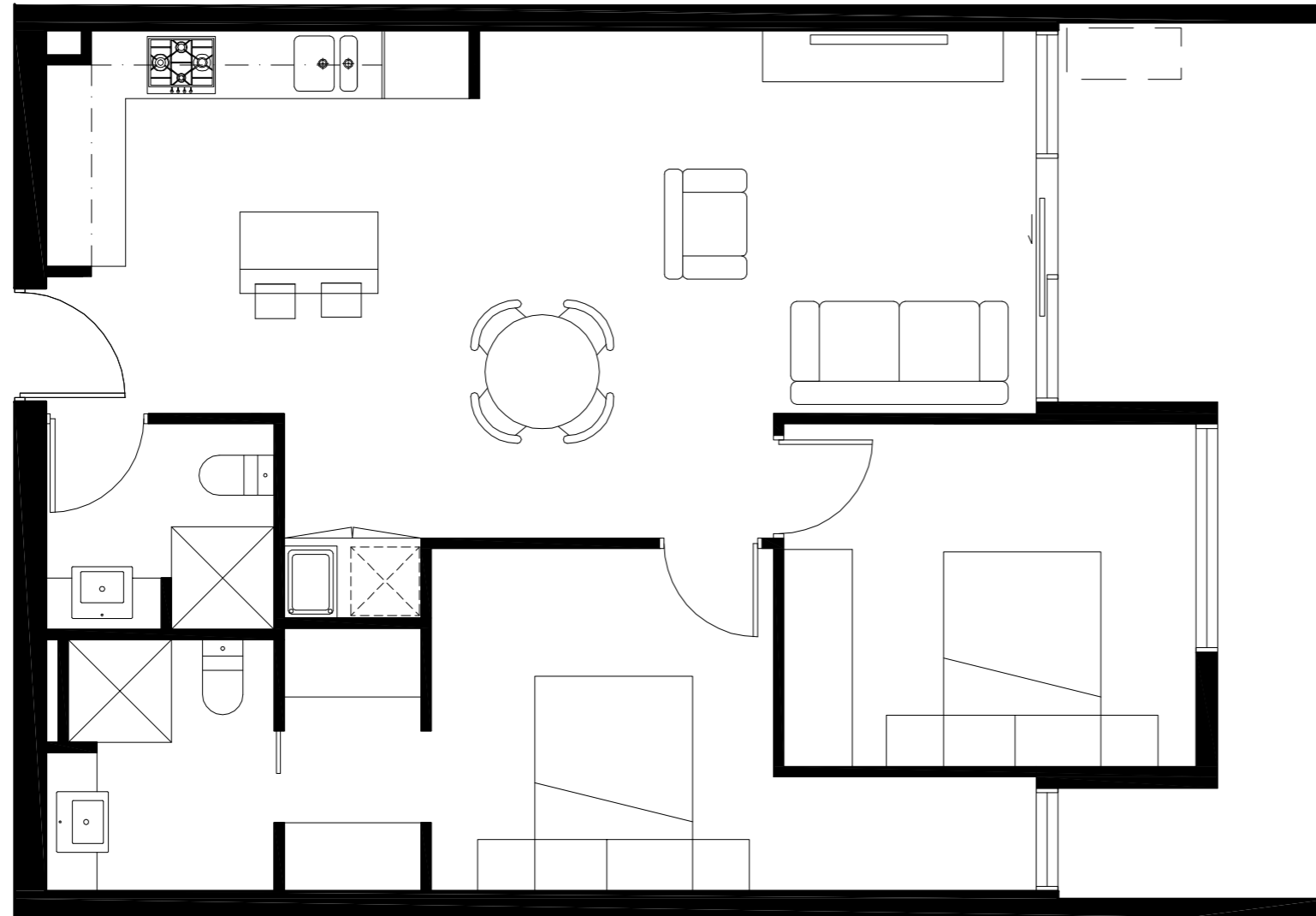
RINGWOOD RESIDENCES

TYPE C

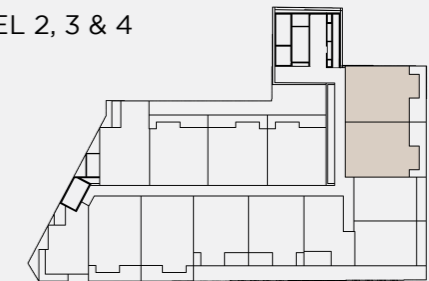
BEDROOMS	2
BATHROOMS	2
CARPARKS	1
STORAGE	1

RESIDENCE AREA	70.0m ²
TERRACE / BALCONY AREA	13.0m ²

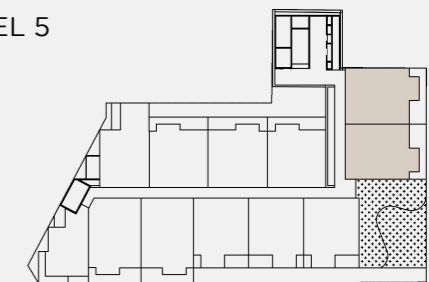
TOTAL AREA 83.0m²



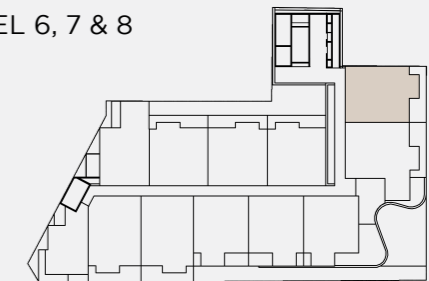
LEVEL 2, 3 & 4



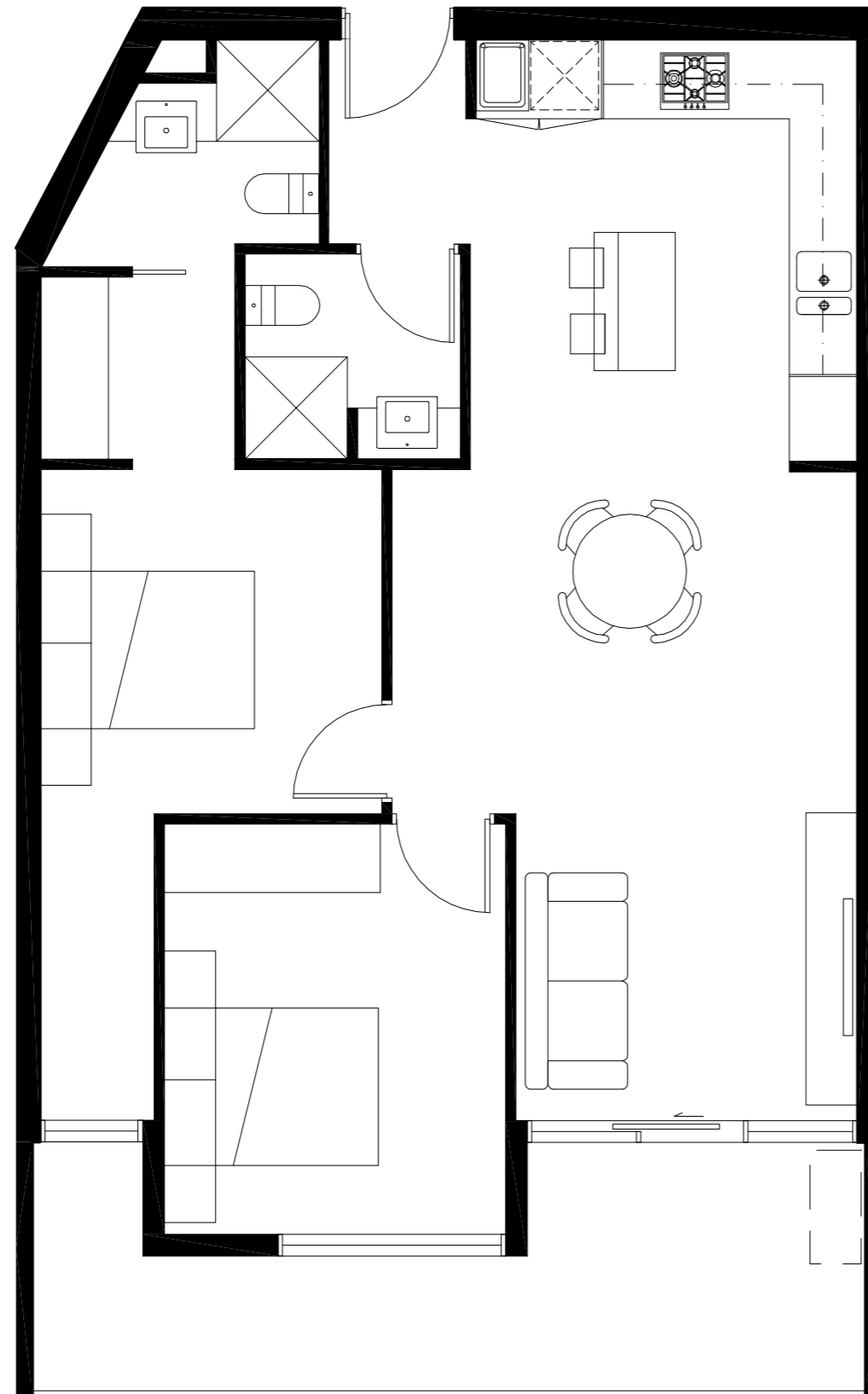
LEVEL 5



LEVEL 6, 7 & 8



The material contained in this brochure does not constitute an offer, inducement, representation, warranty or contract. All images are artist's impressions only and are intended as a guide only. Loose furniture, white goods and planters and any items depicted are not included in the sale of any apartment, are for illustrative purposes only and may not be to scale. Images may not identify adjacent structures, features or landscaping. The area, layout and dimensions depicted in images of apartments and common property in the Development are not to scale and may differ from actual areas and measurements upon completion. Measurements are not of floor areas and may be based upon any methodology determined by the Vendor or Developer. All prospective purchasers rely on their own enquiries in relation to the Development, including areas and dimensions of apartments (it being acknowledged that there are different methodologies of measurement) and common property, having regard to the Architectural Plans, the Specifications, the Plan of Subdivision and any other information in the Contract and the Vendor's Statement. If a Contract of Sale is entered into, purchasers acknowledge that nothing in this brochure has been relied upon and that the Contract of Sale contains the only representations upon which the Purchaser relies.



233 EAST

RINGWOOD RESIDENCES

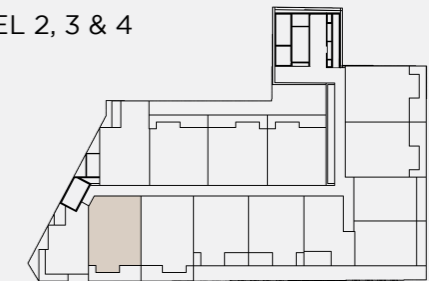
TYPE D

BEDROOMS	2
BATHROOMS	2
CARPARKS	1
STORAGE	1

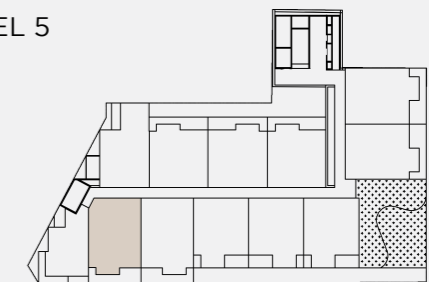
RESIDENCE AREA	70.2m ²
TERRACE / BALCONY AREA	12.6m ²

TOTAL AREA 82.8m²

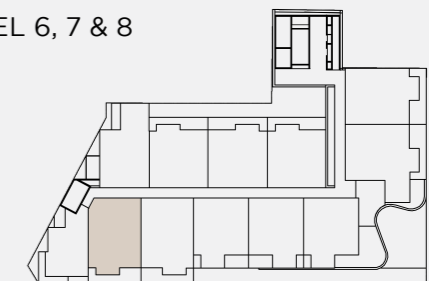
LEVEL 2, 3 & 4



LEVEL 5



LEVEL 6, 7 & 8



The material contained in this brochure does not constitute an offer, inducement, representation, warranty or contract. All images are artist's impressions only and are intended as a guide only. Loose furniture, white goods and planters and any items depicted are not included in the sale of any apartment, are for illustrative purposes only and may not be to scale. Images may not identify adjacent structures, features or landscaping. The area, layout and dimensions depicted in images of apartments and common property in the Development are not to scale and may differ from actual areas and measurements upon completion. Measurements are not of floor areas and may be based upon any methodology determined by the Vendor or Developer. All prospective purchasers rely on their own enquiries in relation to the Development, including areas and dimensions of apartments (it being acknowledged that there are different methodologies of measurement) and common property, having regard to the Architectural Plans, the Specifications, the Plan of Subdivision and any other information in the Contract and the Vendor's Statement. If a Contract of Sale is entered into, purchasers acknowledge that nothing in this brochure has been relied upon and that the Contract of Sale contains the only representations upon which the Purchaser relies.

233 EAST

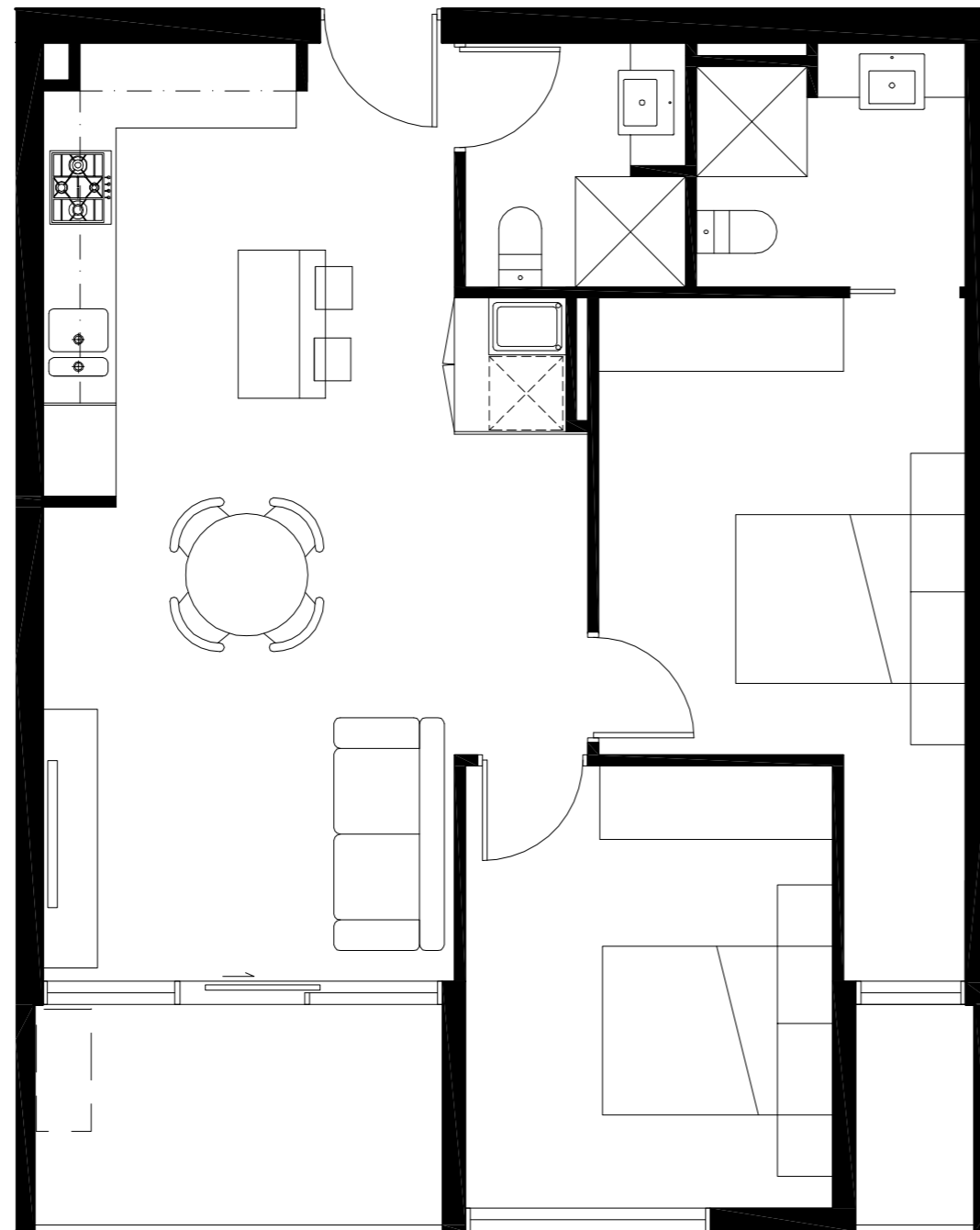
RINGWOOD RESIDENCES

TYPE E

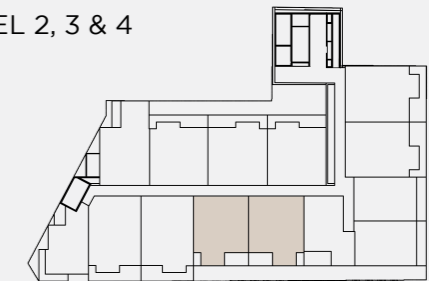
BEDROOMS	2
BATHROOMS	2
CARPARKS	1
STORAGE	1

RESIDENCE AREA	70.2m ²
TERRACE / BALCONY AREA	12.6m ²

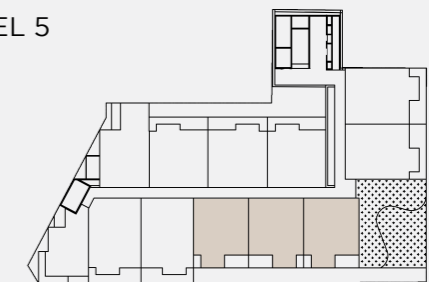
TOTAL AREA 82.8m²



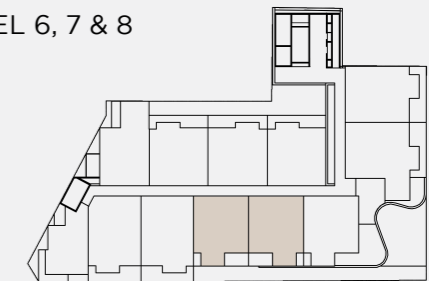
LEVEL 2, 3 & 4



LEVEL 5



LEVEL 6, 7 & 8



The material contained in this brochure does not constitute an offer, inducement, representation, warranty or contract. All images are artist's impressions only and are intended as a guide only. Loose furniture, white goods and planters and any items depicted are not included in the sale of any apartment, are for illustrative purposes only and may not be to scale. Images may not identify adjacent structures, features or landscaping. The area, layout and dimensions depicted in images of apartments and common property in the Development are not to scale and may differ from actual areas and measurements upon completion. Measurements are not of floor areas and may be based upon any methodology determined by the Vendor or Developer. All prospective purchasers rely on their own enquiries in relation to the Development, including areas and dimensions of apartments (it being acknowledged that there are different methodologies of measurement) and common property, having regard to the Architectural Plans, the Specifications, the Plan of Subdivision and any other information in the Contract and the Vendor's Statement. If a Contract of Sale is entered into, purchasers acknowledge that nothing in this brochure has been relied upon and that the Contract of Sale contains the only representations upon which the Purchaser relies.

233 EAST

RINGWOOD RESIDENCES

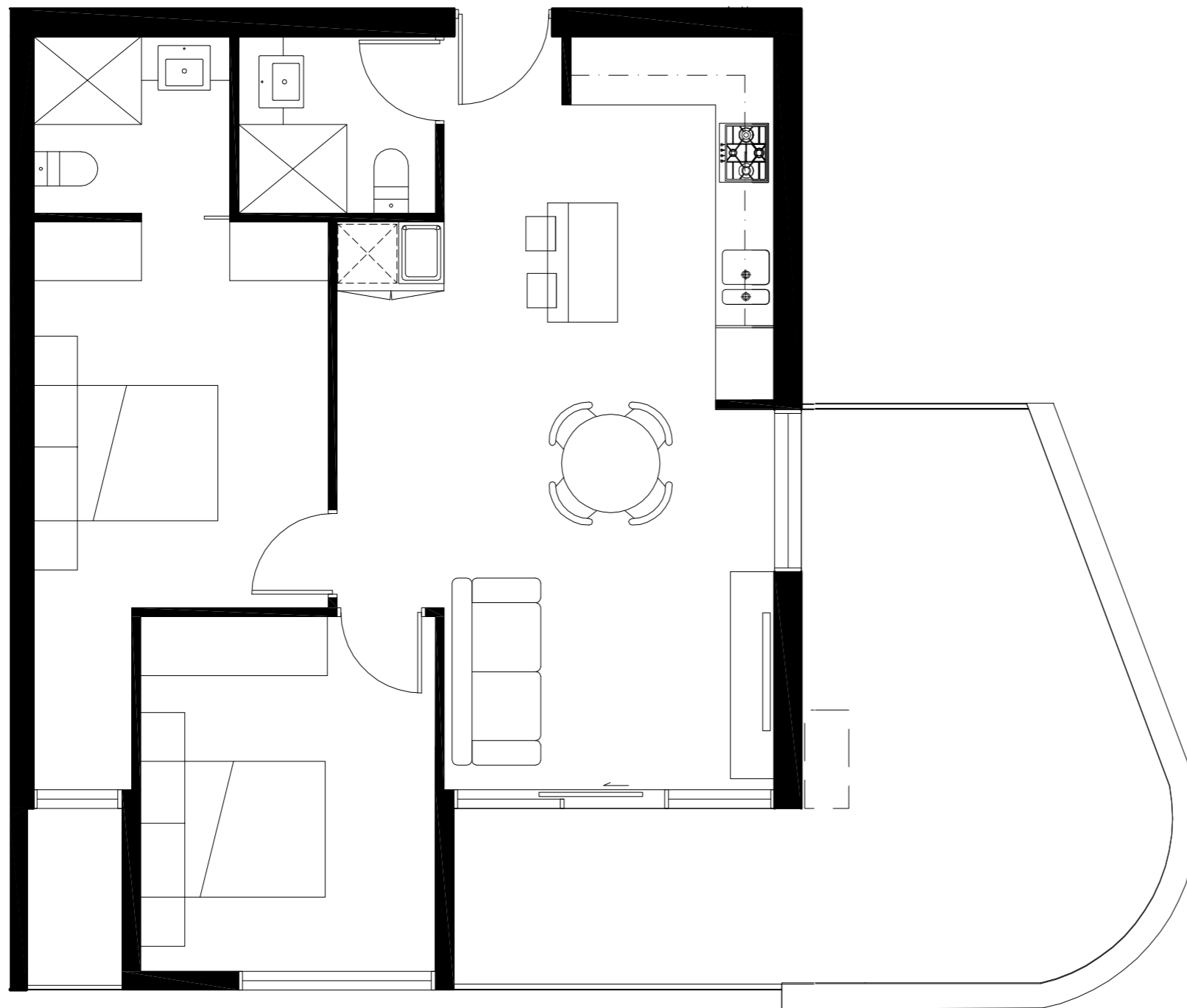
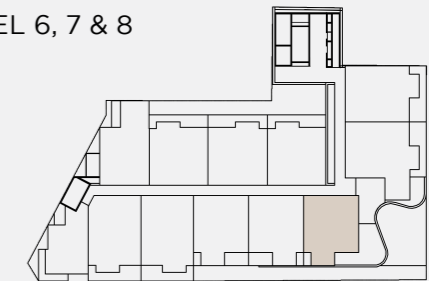
TYPE F

BEDROOMS	2
BATHROOMS	2
CARPARKS	1
STORAGE	1

RESIDENCE AREA	64.0m ²
TERRACE / BALCONY AREA	25.0m ²

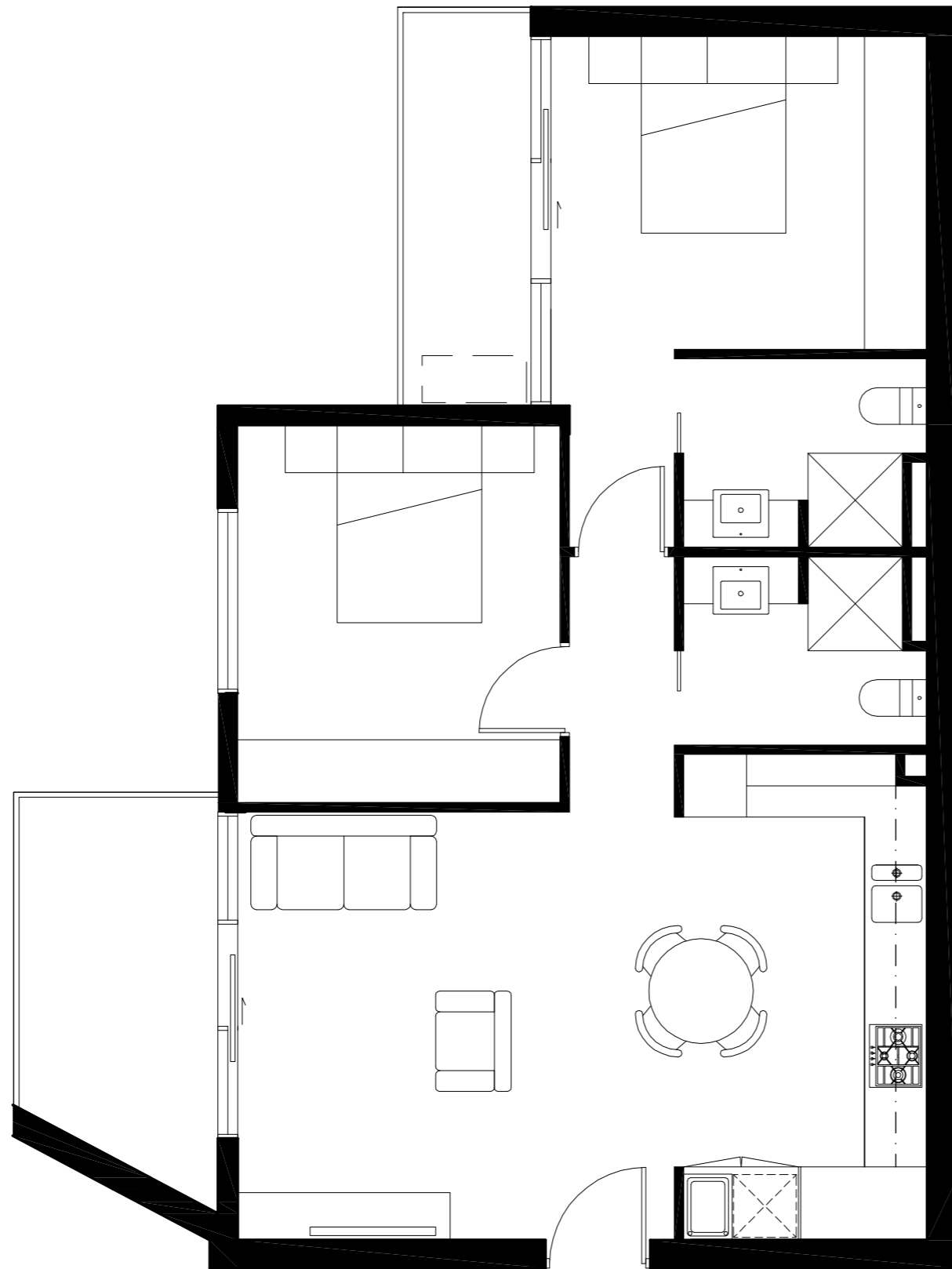
TOTAL AREA 89.0m²

LEVEL 6, 7 & 8



The material contained in this brochure does not constitute an offer, inducement, representation, warranty or contract. All images are artist's impressions only and are intended as a guide only. Loose furniture, white goods and planters and any items depicted are not included in the sale of any apartment, are for illustrative purposes only and may not be to scale. Images may not identify adjacent structures, features or landscaping. The area, layout and dimensions depicted in images of apartments and common property in the Development are not to scale and may differ from actual areas and measurements upon completion. Measurements are not of floor areas and may be based upon any methodology determined by the Vendor or Developer. All prospective purchasers rely on their own enquiries in relation to the Development, including areas and dimensions of apartments (it being acknowledged that there are different methodologies of measurement) and common property, having regard to the Architectural Plans, the Specifications, the Plan of Subdivision and any other information in the Contract and the Vendor's Statement. If a Contract of Sale is entered into, purchasers acknowledge that nothing in this brochure has been relied upon and that the Contract of Sale contains the only representations upon which the Purchaser relies.





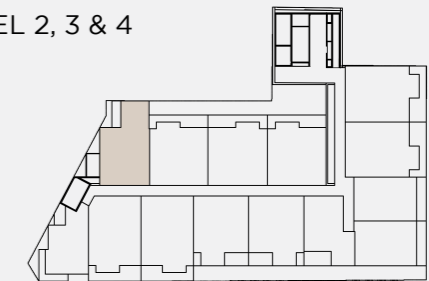
233 EAST

RINGWOOD RESIDENCES

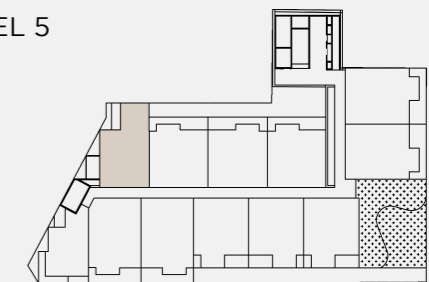
TYPE J

BEDROOMS	2
BATHROOMS	2
CARPARKS	1
STORAGE	1
RESIDENCE AREA	65.0m ²
TERRACE / BALCONY AREA	11.2 m ²
TOTAL AREA	76.2m²

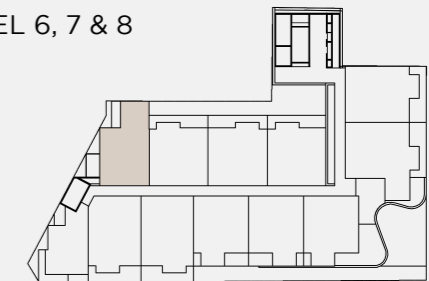
LEVEL 2, 3 & 4



LEVEL 5



LEVEL 6, 7 & 8



The material contained in this brochure does not constitute an offer, inducement, representation, warranty or contract. All images are artist's impressions only and are intended as a guide only. Loose furniture, white goods and planters and any items depicted are not included in the sale of any apartment, are for illustrative purposes only and may not be to scale. Images may not identify adjacent structures, features or landscaping. The area, layout and dimensions depicted in images of apartments and common property in the Development are not to scale and may differ from actual areas and measurements upon completion. Measurements are not of floor areas and may be based upon any methodology determined by the Vendor or Developer. All prospective purchasers rely on their own enquiries in relation to the Development, including areas and dimensions of apartments (it being acknowledged that there are different methodologies of measurement) and common property, having regard to the Architectural Plans, the Specifications, the Plan of Subdivision and any other information in the Contract and the Vendor's Statement. If a Contract of Sale is entered into, purchasers acknowledge that nothing in this brochure has been relied upon and that the Contract of Sale contains the only representations upon which the Purchaser relies.