

Environmentally Minded

Being sympathetic to the environment both around and inside the home, these 16 apartments by Eco-Urban Design have been created to enhance the natural surrounds and provide a contemporary finish to emulate the lifestyle of its residents.

Spanning across 3 levels, these 1, 2 and 3 bedroom homes are encased in a smooth rendered finish and glass balconies on which to entertain family and guests. All apartments include secure underground parking with additional storage, giving residents the opportunity to enjoy more spacious living without the added clutter.



Wide Open Spaces

Created as a place to unwind at the end of a long day, the effortless design of the homes of Kurrajong Place bring spacious interiors, filled with natural light into each room. Full-length windows that open to generous balconies are ideal for outdoor dining or a relaxing afternoon. Kitchens have been designed to be highly functional, to make preparing even the most complex meal with ease, with reconstituted stone tops, glass splashbacks, and modern stainless steel appliances by Smeg.











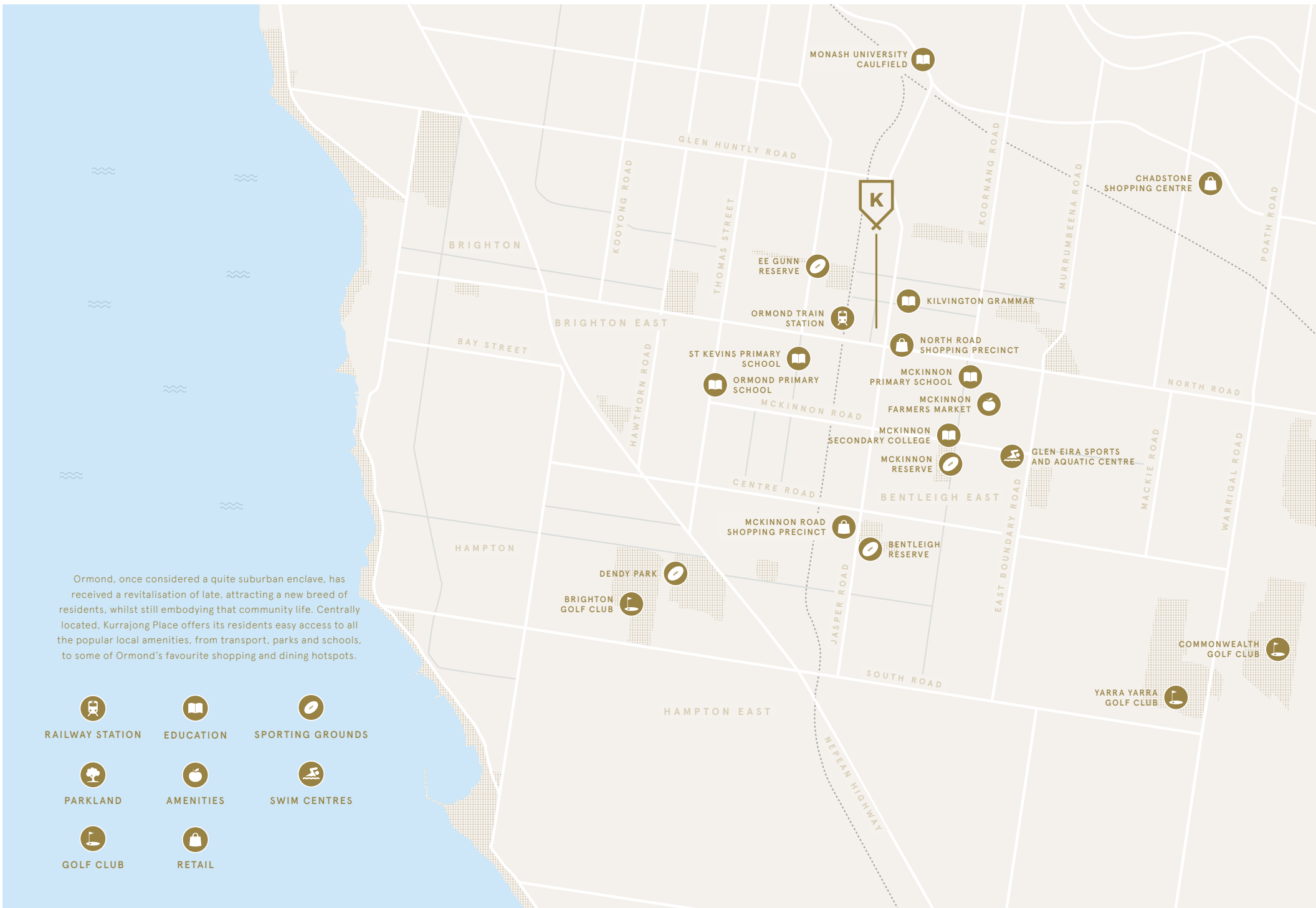


Complimentary Nature

The clean and light mood of the home flows effortlessly into each bathroom, with semi-frameless shower screen and matching mirrors over vanities creating a wonderful sense of space in the room. The added touch of porcelain tiles gives the bathroom a smooth and modern finish.

Ormond, once considered a quite suburban enclave, has received a revitalisation of late, attracting a new breed of residents, whilst still embodying that community life. Centrally located, Kurrajong Place offers its residents easy access to all the popular local amenities, from transport, parks and schools, to some of Ormond's favourite shopping and dining hotspots.

- 
RAILWAY STATION

EDUCATION

SPORTING GROUNDS
- 
PARKLAND

AMENITIES

SWIM CENTRES
- 
GOLF CLUB

RETAIL



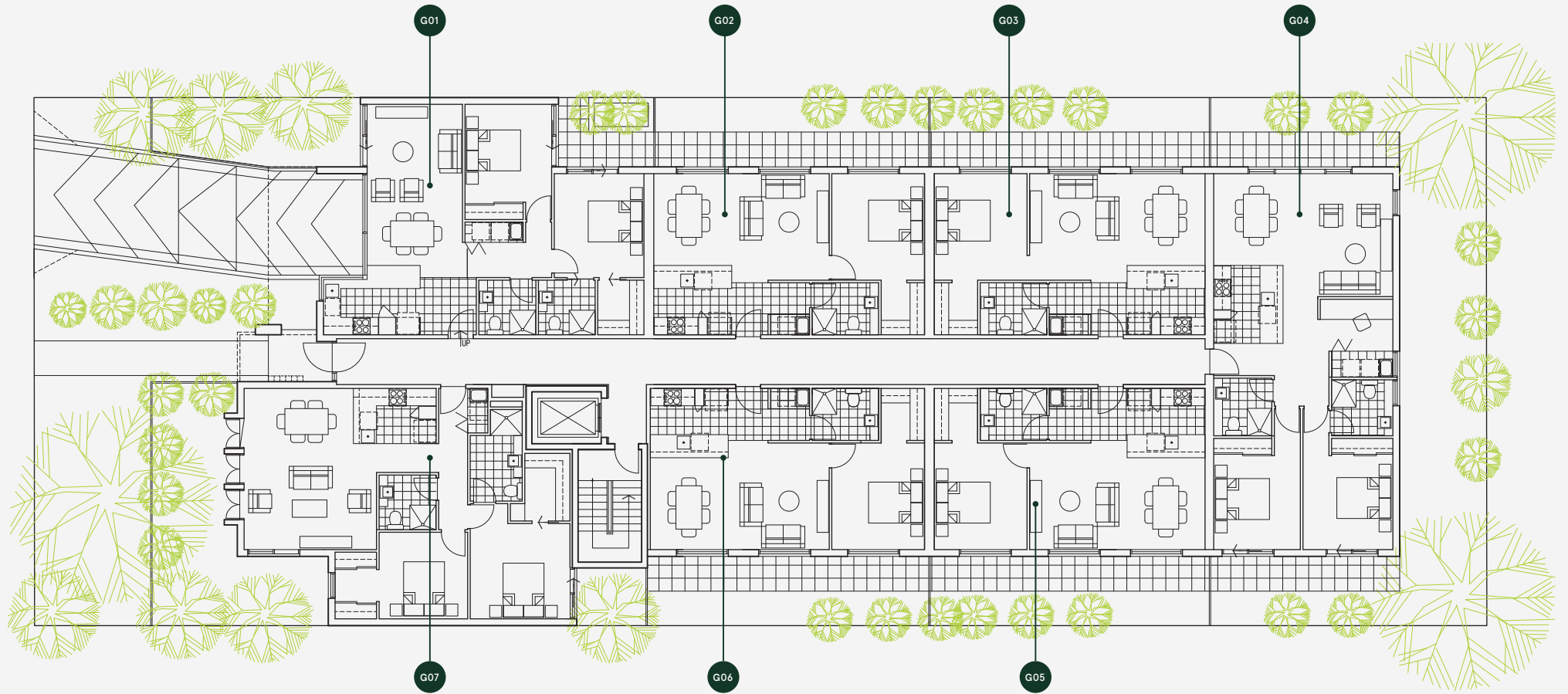


At the centre of its trendy resurgence, Ormond now provides residents a wide selection of dining options, from Common Ground Coffee Roasters to Jimmy Grant for some of the best souvlaki in the state. Smaller retail outlets and supermarkets can be found along North Road for all grocery needs, while Chadstone Shopping Centre and Westfield Southland are both within a 15-minute drive.

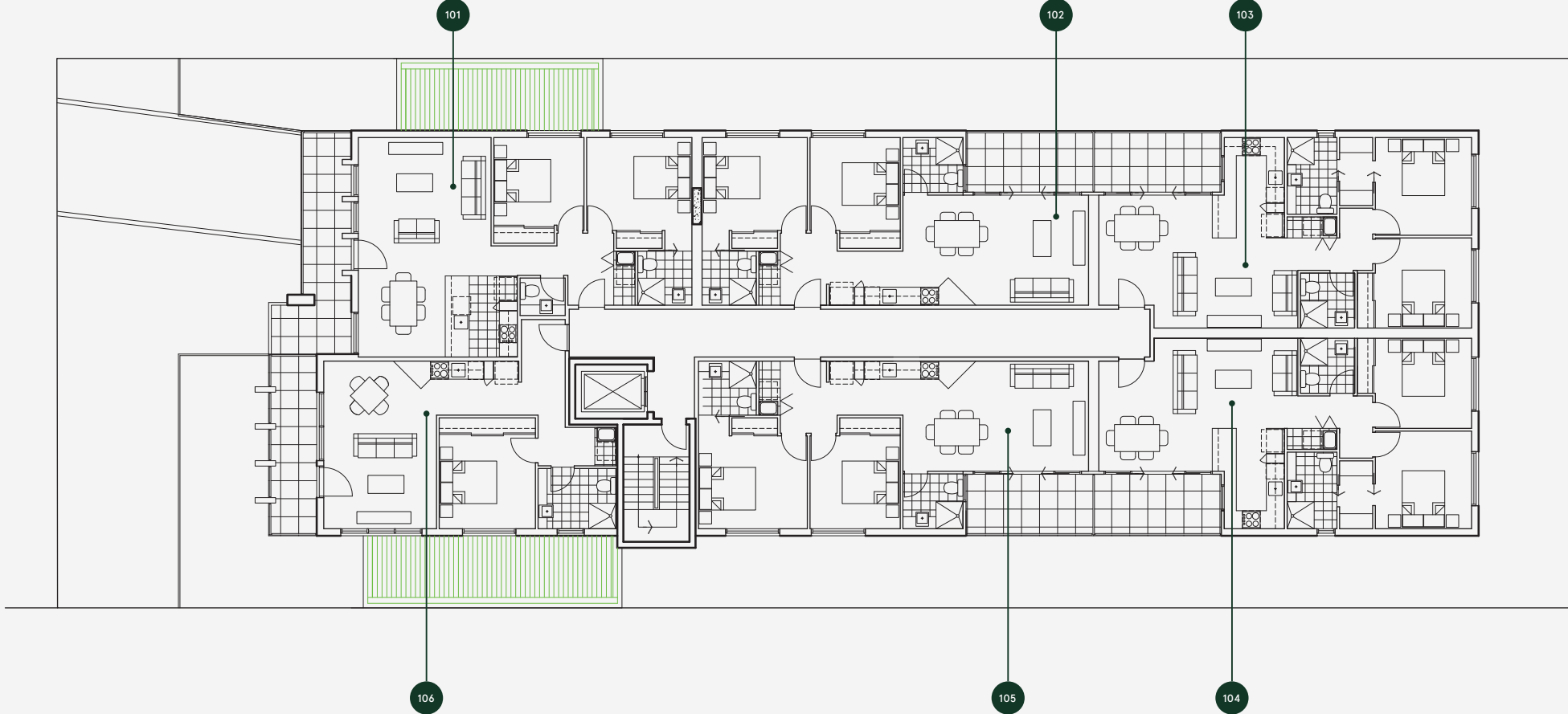


Transport and education are also abundant, including Ormond Train Station and local bus lines, which will take you down to Brighton Beach on a hot summer's day. Residents will also appreciate easy access to primary, secondary and tertiary education including St Kevin's Primary School, McKinnon Primary and Secondary College, Kilvington Grammar and Monash University Caulfield.

Ground Floor



Level One



Level Two

