

1. HORTICULTURAL CARE  
Landscape works are to be maintained and nurtured. Mulched and gravel surfaces to be kept tidy and topped up as necessary. Any soil subsidence or erosion to be rectified. Landscape establishment/maintenance must encompass accepted horticultural practices, as well as rectifying any defects that become apparent under normal use. This includes, but may not be limited to: watering, mowing, fertilising, cultivation, topdressing, renovating, aerating, re-grassing, weeding, pest/disease control, staking, plant replacement and re-planting, pruning, clearing stormwater pits, repairing irrigation faults, raking, sweeping and topping up mulch, promoting healthy plant growth and keeping landscape appearance neat and tidy.

Weed and pest control: Manual weed removal is preferred, but chemical use (herbicides, fungicides, pesticides etc) may become appropriate. Such use shall be strictly in accordance with health and safety regulations. Spraying shall be only on still days. Sprayed areas to be marked with dye, protected from public access, and left for 10 days before any further works. Owner to be notified before carrying out any spraying.

Watering: During summer, trees and garden beds are to be watered regularly to ensure stress-free growth and survival. Note: all garden areas and planter boxes to include drip irrigation system. Minimum weekly summer water requirements, subject to Melbourne's water restrictions, are deemed to be: Grass areas - no watering; Trees and shrubs - 20mm of rainfall or applied equivalent.

Logbook: Landscape contractor to keep a logbook record (available for inspection upon request) of all maintenance work to include dates, task descriptions and materials used.

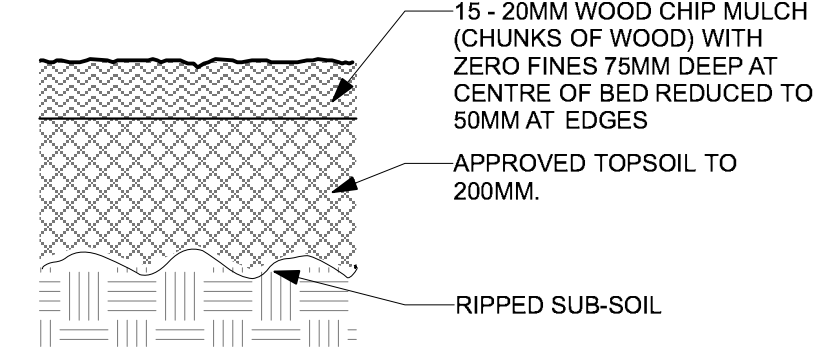
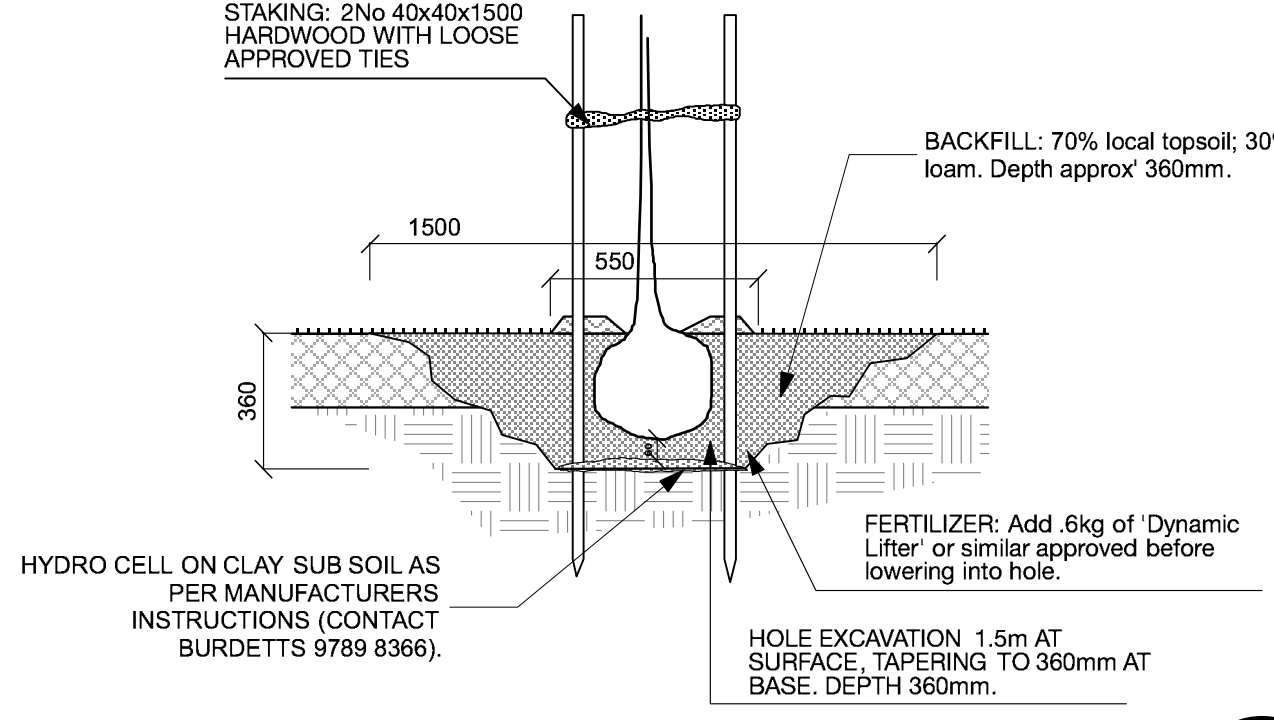
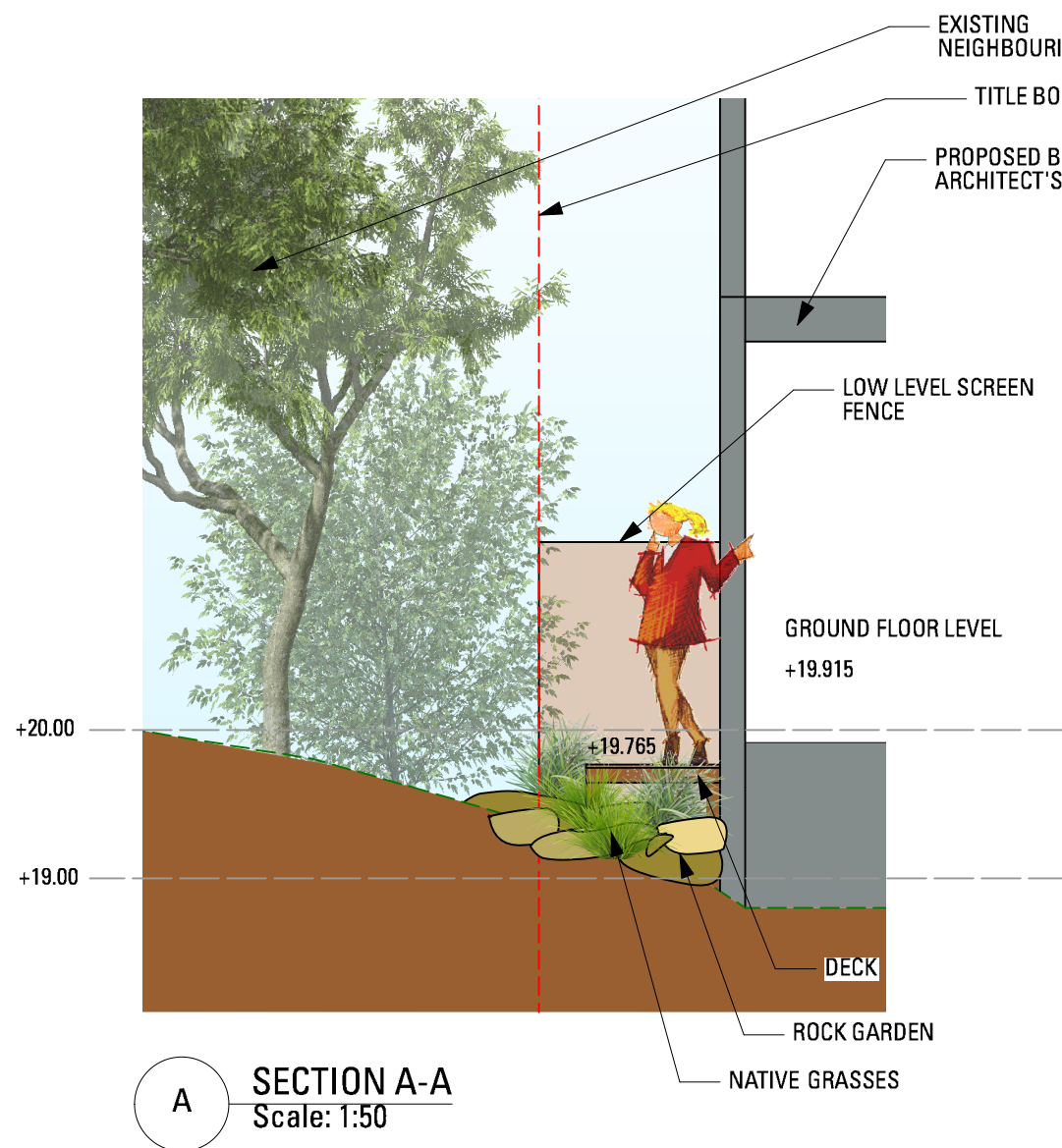
2. EVALUATION STANDARDS  
At inspections, the following standards will apply:  
Trees, shrubs and groundcovers: species and quantities correct in weed-free mulched beds with healthy new growth, free of pest/disease, and trees with straight strong trunks; staking as appropriate for larger specimens. Beds and Lawns: weed-free, evenly mulched with specified material and to specified depth. Grass forming a dense continuous healthy weed-free sward without need of spot repairs, evenly green in colour, of a consistent height and recently fertilised. Generally: 100% living plants in a fresh, tidy 'spot on' appearance.

Plant List							
Image	ID	Qty	Common Name	Botanical Name	Scheduled Size	Mature Height	Mature Spread
Trees							
	TI	7	Kanooka, Water Gum	Tristaniaopsis laurina	45 Litre	8m	4m
	CallisKP	1	Weeping Bottlebrush	Callistemon viminalis 'King Park Special'	250mm Pot	4+m	3+m
Shrubs							
	Cgl	13	Rock Correa	Correa glabra	150mm Pot	1.5 - 3m	1.2 - 2.0m
	Wir	62	Hybrid Westringia	Westringia 'Low Horizon'	150mm pot	.3m	.3m
	Llin	5	Woolly Tea Tree	Leptospermum lanigerum	150mm Pot	1.5 - 3m	3.0m
	CallistLJ	19	Weeping Bottlebrush	Callistemon viminalis 'Little John'	150mm Pot	0.9 - 1.5m	0.8 - 1.2m
	Lcs	4	Hybrid Tea Tree	Leptospermum 'Copper Sheen'	200mm Pot	2m	2.0m
	Clw	3	Mountain Correa	Correa lawrenciana	150mm Pot	1.5 - 3m	1.2 - 2.0m
	Dvc	6	Wedge-leaf Hop-bush	Dodonaea Viscosa ssp. cuneata	200mm Pot	1.0-3.0m	1.0-3.0m
Ground Covers							
Grasses							
	Drev	19	Spreading Flax Lily	Dianella revoluta	150mm Pot	.5m	.5m
	Ltani	77	Dwarf mat-rush	Lomandra longifolia 'Tanika'	150mm Pot	0.6m	0.65m
	Poa	23	Tussock Grass	Poa labillardieri		0.75 - 0.9m	0.6 - 0.9m
Climbers							
	Total	239					

EXISTING TREE SCHEDULE (by Galbraith & Associates dated 27 August 2014)									
Tree No	Genus Species	Common Name	Height	Canopy	Calliper	Condition	SULE	Significance	Action/Comment
E01	Eucalyptus camaldulensis	River Red Gum	10000	8000	480	Good	Not Set	Not Set	Retain
E02	Eucalyptus camaldulensis	River Red Gum	20000	15000	720	Good	Not Set	Not Set	Retain
E03	Eucalyptus camaldulensis	River Red Gum	11000	9000	510	Good	Not Set	Not Set	Retain
E04	Eucalyptus camaldulensis	River Red Gum	20000	15000	630	Good	Not Set	Not Set	Retain
E05	Prunus persica	Peach	7000	7000	300	Poor	Not Set	Not Set	Remove
E06	Prunus dulcis	Almond	6000	6000	250	Average	Not Set	Less Significant	Retain
E07	Eucalyptus camaldulensis	River Red Gum	17000	10000	400	Good	Not Set	Highly Significant	Retain
E08	Eucalyptus camaldulensis	River Red Gum	13000	6000	320	Not Set	Not Set	Not Set	Retain
E09	Eucalyptus camaldulensis	River Red Gum	20000	17000	690	Good	Not Set	Highly Significant	Retain - Arborist work r
E10	Eucalyptus camaldulensis	River Red Gum	20000	12000	440	Not Set	Not Set	Highly Significant	Retain
E11	Acacia baileyana	Cootamundra Wattle	8000	8000	260	Poor	Not Set	Less Significant	Retain
E12	Eucalyptus camaldulensis	River Red Gum	12000	9000	520	Good	Not Set	Highly Significant	Retain
E13	Eucalyptus camaldulensis	River Red Gum	14000	10000	610	Good	Not Set	Highly Significant	Retain
E14	Corymbia citriodora	Lemon-Scented Gum, Spotted L	10000	10000	300	Average	Not Set	Highly Significant	Retain
E15	Eucalyptus camaldulensis	River Red Gum	15000	15000	500	Average	Not Set	Highly Significant	Retain
E16	Mealeuca armillaris	Giant Honeyvine, Bracelet Ho	5000	5000	500	Poor	Not Set	Highly Significant	Retain
E17	Eucalyptus camaldulensis	River Red Gum	10000	4000	300	Poor	Not Set	Less Significant	Retain
E18	Lophostemon confertus	Brush Box	7000	8000	300	Good	Not Set	Less Significant	Retain
E19	Lophostemon confertus	Brush Box	10000	10000	450	Good	Not Set	Highly Significant	Retain
E20	Eucalyptus camaldulensis	River Red Gum	6000	4000	120	Good	Not Set	Highly Significant	Retain
E21	Citrus sinensis	Orange	4000	4000	120	Not Set	Not Set	Less Significant	Remove
E22	Deciduous shrub		4000	4000	120	Not Set	Not Set	Less Significant	Remove
E23	Citrus limon	Lemon	4000	4000	120	Not Set	Not Set	Less Significant	Remove
E24	Lophostemon confertus	Brush Box	9000	10000	380	Not Set	Not Set	Less Significant	Retain

LEGEND

- Existing Vegetation To Be Retained. Dotted Line shows Tree Protection Zone 'TPZ' (refer to Existing Tree Schedule above)
- Proposed Tree To Be Removed
- Proposed Shrubs (refer to Plant List below)
- +21.025 Proposed Level
- Mulched And Irrigated Garden Bed
- Lawn
- Pedestrian Feature Paving
- Exposed Bluestone Aggregate Concrete
- Permeable Concrete Paving
- Deck
- Crazy Stone Paving
- Rock Garden
- New Retaining Wall
- Low Level Timber Screen Fence
- Existing Retaining Wall
- Existing Paling Fence



2 GARDEN BED DETAIL Scale: 1:10

1 SEMI ADVANCED TREE DETAIL Scale: 1:20